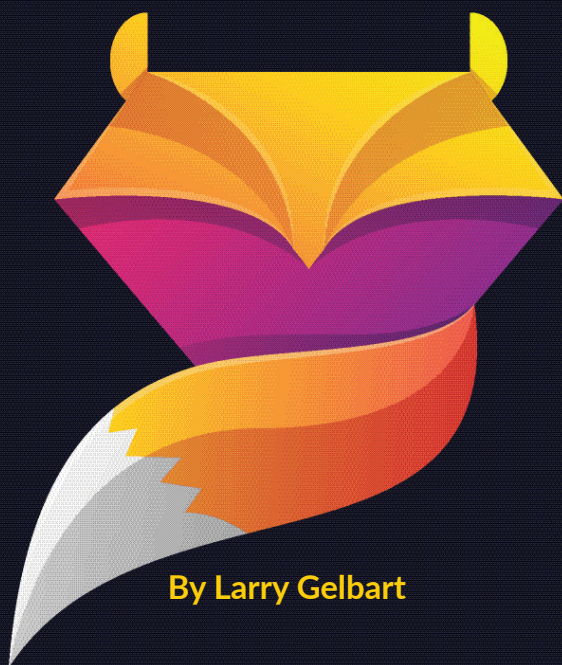


# SLY FOX



By Larry Gelbart



**TJC**<sup>TM</sup>

# Cast

|                          |  |
|--------------------------|--|
| Simon Able.....          | Colby Raasch (Argyle)  |
| Sly's Servants .....     | Willow Duncan (Mt. Pleasant)<br>Ian Martin (Tyler)<br>Skyler Martin (Hughes Springs) |
| Foxwell J. Sly .....     | Timothy Wright (Longview)  |
| Lawyer Craven.....       | Manasseh Matatila (Arlington)  |
| Jethro Crouch .....      | Trinity McCarley (Mabank)  |
| Abner Truckle.....       | Jackson Holmes (Whitehouse)  |
| Miss Fancy .....         | Liah Severino (Keller)   |
| Mrs. Truckle.....        | Alisabeth Farris (Whitehouse)  |
| Crouch's Servant .....   | Cody Craig (Brownsboro)  |
| Captain Crouch.....      | Matthew Craig (Brownsboro)   |
| The Chief of Police..... | Robbie Wilt (Tyler)  |
| Court Clerk .....        | Juan Hernandez (Tyler)   |
| Policeman/Bailiff .....  | Avery Paige Broussard (Colmnesneil)  |

# Scene

San Francisco, 1850s

There will be a 10-minute intermission between Act 1 and Act 2

Produced by special arrangement with Samuel French, Inc.

# *Production Staff*

Stage Direction, Scenic Design, Sound Design .....Jacob L. Davis

Costume Design ..... Rebecca Faulds-Howard

Lighting Design, Properties Design.....Denise Weatherly-Green

Theatre Management.....Dr. David W. Crawford

Chair of Theatre Department..... Lara K. Smith

Facility Director .....Bryce McWilliams

# *Student Production Staff*

Stage Manager ..... Maria Sarri (Thessaloniki, Greece)

Asst. Stage Manager..... Jamie Yazell (Gilmer)

Director's Assistant/Understudy ..... Edmund Davies (Whitehouse)

Running Crew:

Costume Mistress ..... Gracie Johnson, (Krum), Maddie Kimble (Winona)

Makeup & Hair.....Danny Domain (Ferris)

Lighting Controls..... Audrey Lassanske (Brownsboro)

Head Usher:..... Savannah Mack



**TJC**

**CULTURAL ARTS**

— DISTRICT —

**THEATRE TJC**