

General Education Committee 2016-2017 Annual Report

I. Objectives

A. Goal: Continue the long-range plan for core assessment, including assessment, data, collection and analysis, and review and feedback.

B. Objectives

1. Promote to faculty and students the idea that this is our culture
2. Enhance teaching of core competencies
3. Disseminate college-wide survey to determine overall opinion of student improvement (especially from PT and NHS areas where students come from Gen Ed to programs)
4. Continue calibration—internal and external
5. Increase transparency of committee decision making
6. Explore tracks/pathways within Gen Ed core

II. Actions and Outcomes

A. Actions:

1. A professional development session was held during Fall convocation and attended by 7 faculty members.
2. A professional development session was held during Fall adjunct and dual credit convocation and attended by 54 adjunct and dual credit faculty members.
3. SPAN 2312 was rejected for inclusion in the core curriculum.
4. Change from CS1 written communication to CS3 visual communication was approved for MATH 1314/1414, 1316, 1324, 1332, 1342/1442, 2413.
5. The committee established procedure for leadership change based on a two-year cycle as co-chair and chair.
6. An ex-officio representative from faculty senate was added to the committee membership.
7. Assignment change for EDUC 1300 was approved. No SLOs were changed.
8. SPAN 2311 was rejected for inclusion in the core curriculum.
9. MUSI 1310 was accepted for inclusion in the core curriculum to be submitted to THECB in 2016.
10. Selected questions on the Community College Survey of Student Engagement (CCSSE) were mapped to the core competencies.
11. COSC 1301 was accepted for inclusion in the core curriculum to be submitted to THECB in 2017.
12. Feedback on Gen Ed from the Spring 2016 College-Wide Assessment Survey indicated that there seems to be a disconnect between “general

education” and “core curriculum” and that faculty may not be using rubrics effectively.

13. The course proposal process and timeline were revised to improve clarity and efficiency.

B. Outcomes

1. Assessments

- a. Canvas data was collected in June for Fall 2016 and Spring 2017 core courses. Data report was delivered to the committee in November.
- b. Data were analyzed by semester, number of student semester credit hours (SCH), and by specific core competencies. Based on IERP recommendation, the category “did not submit” was excluded from the data analysis.
- c. An error occurred in the processing of data from BIOL 2401 and 2402 which skewed the results for CT2-3 and EQS 2.

2. Results

- a. Competency-specific results for Fall 2016 and Spring 2017, along with combined Fall/Spring results, are included in section III of this document.
- b. Analysis of comparative results (Fall – Spring, <20SCH – 20+SCH, and Spring 2016 – Spring 2017) are included.
 - i. There were no significant differences between Fall 2016 and Spring 2017. The data were combined for further analysis.
 - ii. Results for students with 20+SCH were significantly higher than results for students with <20SCH. Further analysis was considered solely on the basis of students with 20+SCH.
 - iii. Results for Spring 2017 (20+SCH) were significantly lower than results for Spring 2016 (20+SCH) and Spring 2015 (20+SCH).

III. Core Curriculum Assessment Information Fall 2016-Spring 2017

This document contains the data analysis for the assessment results for the 2016-2017 academic year.

Contents

Core Curriculum Assessment Information Fall 2016-Spring 2017	3
Part 1: Results for Fall 2016	4
Table 1: Results for Communication	4
Table 2: Results for Critical Thinking	6
Table 3: Results for Empirical and Quantitative Skills	8
Table 4: Results for Personal Responsibility	10
Table 5: Results for Social Responsibility	12
Table 6: Results for Teamwork	14
Part 2: Results for Spring 2017	16
Table 7: Results for Communication	16
Table 8: Results for Critical Thinking	17
Table 9: Results for Empirical and Quantitative Skills	18
Table 10: Results for Personal Responsibility	19
Table 11: Results for Social Responsibility	20
Table 12: Results for Teamwork	21
Part 3: Comparisons	22
Table 13: Comparison of Fall 2016 to Spring 2017: Percentages of Success	22
Table 14: Comparison of Students with <20 to Students with 20+ SCH: Percentages of Success	24
Table 15: Combined Results: Communication Skills	26
Table 16: Combined Results: Critical Thinking	27
Table 17: Combined Results: Empirical and Quantitative Skills	28
Table 18: Combined Results: Personal Responsibility	29
Table 19: Combined Results: Social Responsibility	30
Table 20: Combined Results: Teamwork	31
Table 21: Comparison of Spring 2015, Spring 2016, Spring 2017: Percentages of Success	32

Tables 15 – 21 are based solely on students with 20+ SCH.

% of Category		CT1-1	CT1-2	CT1-3	CT1-4	CT2-1	CT2-2	CT2-3	CT2-4
<20SCH									
	Exceeds	9.81%	9.29%	8.21%	8.88%	2.36%	2.38%	2.39%	2.09%
	Meets	22.14%	21.75%	20.96%	21.76%	6.99%	7.62%	8.17%	7.98%
	Not Met	5.61%	6.53%	8.40%	6.66%	10.51%	9.72%	9.08%	10.10%
	Totals	37.56%	37.57%	37.57%	37.29%	19.86%	19.72%	19.64%	20.16%

20+SCH									
	Exceeds	19.56%	19.48%	18.11%	19.68%	8.60%	9.66%	9.84%	8.28%
	Meets	35.96%	35.06%	32.96%	35.34%	29.24%	31.45%	33.85%	32.17%
	Not Met	6.92%	7.89%	11.36%	7.68%	42.29%	39.17%	36.67%	39.39%
	Totals	62.44%	62.43%	62.43%	62.71%	80.14%	80.28%	80.36%	79.84%
Grand Total		100.00%	100.00%	100.00%	100.00%	100.00%	100.00%	100.00%	100.00%

***An error occurred in the processing of data from BIOL 2401 and 2402 which skewed the results for CT2-3 and EQS 2.**

Table 4: Results for Personal Responsibility

Fall 2016	Objective:	PR 1: Choices and Consequences		
		Identification	Connection	Response
	Criteria:			
	Totals			
Head-Counts		PR1-1	PR1-2	PR1-3
<20SCH				
	Exceeds	638	662	629
	Meets	1586	1547	1564
	Not Met	306	319	334
	Totals	2530	2528	2527

20+SCH				
	Exceeds	1379	1366	1344
	Meets	2572	2583	2599
	Not Met	472	476	485
	Totals	4423	4425	4428
Grand Total		6953	6953	6955

% Within Category		PR1-1	PR1-2	PR1-3
<20SCH				
	Exceeds	25.22%	26.19%	24.89%
	Meets	62.69%	61.19%	61.89%
	Not Met	12.09%	12.62%	13.22%
	Totals	100.00%	100.00%	100.00%

20+SCH				
	Exceeds	31.18%	30.87%	30.35%
	Meets	58.15%	58.37%	58.69%
	Not Met	10.67%	10.76%	10.95%
	Totals	100.00%	100.00%	100.00%

% of Category		PR1-1	PR1-2	PR1-3
<20SCH				
	Exceeds	9.18%	9.52%	9.04%
	Meets	22.81%	22.25%	22.49%
	Not Met	4.40%	4.59%	4.80%
	Totals	36.39%	36.36%	36.33%

20+SCH				
	Exceeds	19.83%	19.65%	19.32%
	Meets	36.99%	37.15%	37.37%
	Not Met	6.79%	6.85%	6.97%
	Totals	63.61%	63.64%	63.67%
Grand Total		100.00%	100.00%	100.00%

Table 6: Results for Teamwork

Fall 2016	Objective:	TW 1-2: Teamwork		
	Criteria:	Team Interaction	Individual	Purpose/Goal
	Totals			
Head-Counts		TW1-2-1	TW1-2-2	TW1-2-3
<20SCH				
	Exceeds	369	349	338
	Meets	1061	1078	1082
	Not Met	199	207	205
	Totals	1629	1634	1625

20+SCH				
	Exceeds	878	862	850
	Meets	1866	1878	1886
	Not Met	198	206	207
	Totals	2942	2946	2943
Grand Total		4571	4580	4568

% Within Category		TW-1	TW-2	TW-3
<20SCH				
	Exceeds	22.65%	21.36%	20.80%
	Meets	65.13%	65.97%	66.58%
	Not Met	12.22%	12.67%	12.62%
	Totals	100.00%	100.00%	100.00%

20+SCH				
	Exceeds	29.84%	29.26%	28.88%
	Meets	63.43%	63.75%	64.08%
	Not Met	6.73%	6.99%	7.03%
	Totals	100.00%	100.00%	100.00%

% of Category		TW-1	TW-2	TW-3
<20SCH				
	Exceeds	8.07%	7.62%	7.40%
	Meets	23.21%	23.54%	23.69%
	Not Met	4.35%	4.52%	4.49%
	Totals	35.64%	35.68%	35.57%

20+SCH				
	Exceeds	19.21%	18.82%	18.61%
	Meets	40.82%	41.00%	41.29%
	Not Met	4.33%	4.50%	4.53%
	Totals	64.36%	64.32%	64.43%
Grand Total		100.00%	100.00%	100.00%

Table 8: Results for Critical Thinking

Spring 2017	Objective:	CT1: Generate/Communicate				CT 2-3: Analyze/Evaluate			
	Criteria:	Position	Explanation	Evidence	Conclusion	Evidence	Analysis	Evaluation	Synthesis
	Totals								
Head-Counts		CT1-1	CT1-2	CT1-3	CT1-4	CT2-3-1	CT2-3-2	CT2-3-3	CT2-3-4
<20SCH									
	Exceeds	790	771	665	738	45	41	39	35
	Meets	1683	1613	1605	1637	231	217	222	235
	Not Met	503	556	693	552	351	280	235	309
	Totals	2976	2940	2963	2927	627	538	496	579

20+SCH									
	Exceeds	1596	1580	1495	1521	163	145	130	137
	Meets	2813	2761	2637	2829	1065	1014	1059	1054
	Not Met	637	701	903	687	1286	1051	959	1128
	Totals	5046	5042	5035	5037	2514	2210	2148	2319
Grand Total		8022	7982	7998	7964	3141	2748	2644	2898

% Within Category		CT1-1	CT1-2	CT1-3	CT1-4	CT2-3-1	CT2-3-2	CT2-3-3	CT2-3-4
<20SCH									
	Exceeds	26.55%	26.22%	22.44%	25.21%	7.18%	7.62%	7.86%	6.04%
	Meets	56.55%	54.86%	54.17%	55.93%	36.84%	40.33%	44.76%	40.59%
	Not Met	16.90%	18.91%	23.39%	18.86%	55.98%	52.04%	47.38%	53.37%
	Totals	100.00%	100.00%	100.00%	100.00%	100.00%	100.00%	100.00%	100.00%

20+SCH									
	Exceeds	31.63%	31.34%	29.69%	30.20%	6.48%	6.56%	6.05%	5.91%
	Meets	55.75%	54.76%	52.37%	56.16%	42.36%	45.88%	49.30%	45.45%
	Not Met	12.62%	13.90%	17.93%	13.64%	51.15%	47.56%	44.65%	48.64%
	Totals	100.00%	100.00%	100.00%	100.00%	100.00%	100.00%	100.00%	100.00%

% of Category		CT1-1	CT1-2	CT1-3	CT1-4	CT2-3-1	CT2-3-2	CT2-3-3	CT2-3-4
<20SCH									
	Exceeds	9.85%	9.66%	8.31%	9.27%	1.43%	1.49%	1.48%	1.21%
	Meets	20.98%	20.21%	20.07%	20.55%	7.35%	7.90%	8.40%	8.11%
	Not Met	6.27%	6.97%	8.66%	6.93%	11.17%	10.19%	8.89%	10.66%
	Totals	37.10%	36.83%	37.05%	36.75%	19.96%	19.58%	18.76%	19.98%

20+SCH									
	Exceeds	19.90%	19.79%	18.69%	19.10%	5.19%	5.28%	4.92%	4.73%
	Meets	35.07%	34.59%	32.97%	35.52%	33.91%	36.90%	40.05%	36.37%
	Not Met	7.94%	8.78%	11.29%	8.63%	40.94%	38.25%	36.27%	38.92%
	Totals	62.90%	63.17%	62.95%	63.25%	80.04%	80.42%	81.24%	80.02%
Grand Total		100.00%	100.00%	100.00%	100.00%	100.00%	100.00%	100.00%	100.00%

***An error occurred in the processing of data from BIOL 2401 and 2402 which skewed the results for CT2-3 and EQS 2.**

Table 10: Results for Personal Responsibility

Spring 2017	Objective:	PR 1: Choices and Consequences		
	Criteria:	Identification	Connection	Response
	Totals			
Head-Counts		PR1-1	PR1-2	PR1-3
<20SCH				
	Exceeds	554	555	539
	Meets	1301	1289	1293
	Not Met	308	323	327
	Totals	2163	2167	2159

20+SCH				
	Exceeds	1192	1184	1135
	Meets	2050	2053	2088
	Not Met	445	452	465
	Totals	3687	3689	3688
Grand Total		5850	5856	5847

% Within Category		PR1-1	PR1-2	PR1-3
<20SCH				
	Exceeds	25.61%	25.61%	24.97%
	Meets	60.15%	59.48%	59.89%
	Not Met	14.24%	14.91%	15.15%
	Totals	100.00%	100.00%	100.00%

20+SCH				
	Exceeds	32.33%	32.10%	30.78%
	Meets	55.60%	55.65%	56.62%
	Not Met	12.07%	12.25%	12.61%
	Totals	100.00%	100.00%	100.00%

% of Category		PR1-1	PR1-2	PR1-3
<20SCH				
	Exceeds	9.47%	9.48%	9.22%
	Meets	22.24%	22.01%	22.11%
	Not Met	5.26%	5.52%	5.59%
	Totals	36.97%	37.00%	36.92%

20+SCH				
	Exceeds	20.38%	20.22%	19.41%
	Meets	35.04%	35.06%	35.71%
	Not Met	7.61%	7.72%	7.95%
	Totals	63.03%	63.00%	63.08%
Grand Total		100.00%	100.00%	100.00%

Table 12: Results for Teamwork

Spring 2017	Objective:	TW 1-2: Teamwork		
	Criteria:	Team Interaction	Individual	Purpose/Goal
	Totals			
Head-Counts		TW1-2-1	TW1-2-2	TW1-2-3
<20SCH				
	Exceeds	355	353	355
	Meets	813	824	792
	Not Met	173	170	185
	Totals	1341	1347	1332

20+SCH				
	Exceeds	842	818	834
	Meets	1541	1562	1527
	Not Met	160	166	178
	Totals	2543	2546	2539
Grand Total		3884	3893	3871

% Within Category		TW-1	TW-2	TW-3
<20SCH				
	Exceeds	26.47%	26.21%	26.65%
	Meets	60.63%	61.17%	59.46%
	Not Met	12.90%	12.62%	13.89%
	Totals	100.00%	100.00%	100.00%

20+SCH				
	Exceeds	33.11%	32.13%	32.85%
	Meets	60.60%	61.35%	60.14%
	Not Met	6.29%	6.52%	7.01%
	Totals	100.00%	100.00%	100.00%

% of Category		TW-1	TW-2	TW-3
<20SCH				
	Exceeds	9.14%	9.07%	9.17%
	Meets	20.93%	21.17%	20.46%
	Not Met	4.45%	4.37%	4.78%
	Totals	34.53%	34.60%	34.41%

20+SCH				
	Exceeds	21.68%	21.01%	21.54%
	Meets	39.68%	40.12%	39.45%
	Not Met	4.12%	4.26%	4.60%
	Totals	65.47%	65.40%	65.59%
Grand Total		100.00%	100.00%	100.00%

Part 3: Comparisons

Table 13: Comparison of Fall 2016 to Spring 2017: Percentages of Success

Percentages of students who received either “exceeds” or “meets” criteria (%EM) are compared. T test between fall and spring shows no significant difference between these two samples. (T value: 0.017606)

Outcome	Criteria		F16 EM %	S17 EM %
CS1: Written Communication	Organization	CS1-1	87.90%	86.72%
	Development Support	CS1-2	82.11%	83.91%
	Language Skills	CS1-3	87.13%	86.96%
	Format	CS1-4	79.05%	81.70%
CS2: Oral Communication	Develop Support	CS2-1	90.62%	91.97%
	Express Ideas	CS2-2	86.58%	86.46%
CS3: Visual Communication	Develop Support	CS3-1	83.93%	84.17%
	Express Ideas	CS3-2	83.52%	83.07%
CT1: Generate/Communicate	Position	CT1-1	87.47%	85.79%
	Explanation	CT1-2	85.58%	84.25%
	Evidence	CT1-3	80.24%	80.05%
	Conclusion	CT1-4	85.66%	84.44%
CT 2-3: Analyze/Evaluate	Evidence	CT2-3-1	47.19%	47.88%
	Analysis	CT2-3-2	51.10%	51.56%
	Evaluation	CT2-3-3	54.25%	54.84%
	Synthesis	CT2-3-4	50.51%	50.41%
EQS 1: Numerical Data	Manipulate	EQS1-1	75.17%	70.50%
	Analyze	EQS1-2	73.19%	68.80%
	Conclusion	EQS1-3	75.66%	66.13%
EQS 2: Observable Facts	Manipulate	EQS2-1	60.46%	62.70%
	Analyze	EQS2-2	62.86%	64.10%
	Conclusion	EQS2-3	65.86%	65.75%
PR 1: Choices and Consequences	Identification	PR1-1	88.81%	87.13%

	Connection	PR1-2	88.57%	86.77%
	Response	PR1-3	88.22%	86.45%
SR 1: Intercultural Competence	Recognize elements	SR1-1	92.59%	90.76%
	Describe effects	SR1-2	90.43%	89.94%
SR 2: Civic Responsibility	Comprehend	SR2-1	85.78%	84.40%
	Reflect	SR2-2	86.07%	85.52%
	Communicate	SR2-3	86.77%	86.00%
SR 3: Communities	Awareness	SR3-1	89.53%	87.37%
	Impact	SR3-2	88.34%	85.64%
	Action	SR3-3	84.84%	79.45%
TW 1-2: Teamwork	Team Interaction	TW1-2-1	91.31%	91.43%
	Individual	TW1-2-2	90.98%	91.37%
	Purpose/Goal	TW1-2-3	90.98%	90.62%

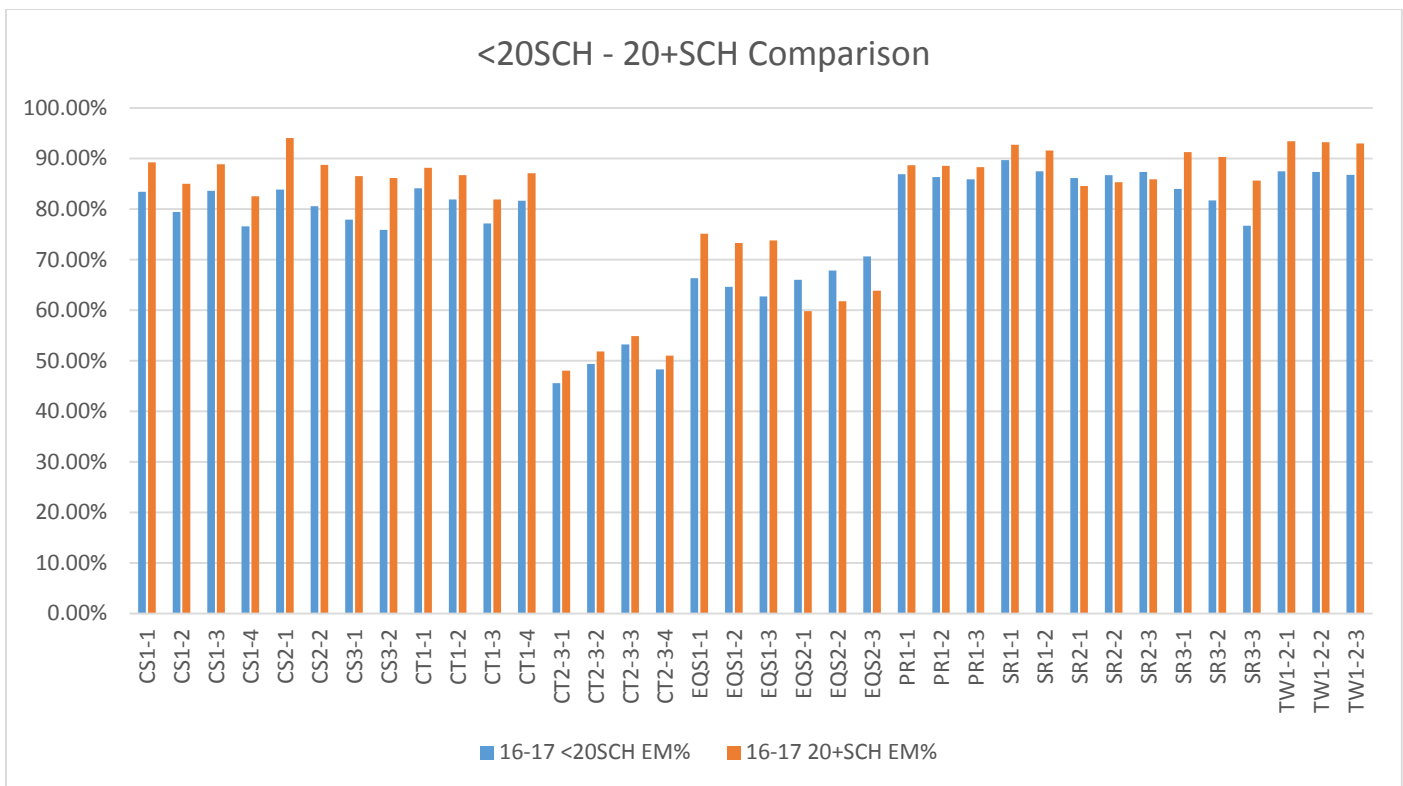
***An error occurred in the processing of data from BIOL 2401 and 2402 which skewed the results for CT2-3 and EQS 2.**

Table 14: Comparison of Students with <20 to Students with 20+ SCH: Percentages of Success

Fall 2016 and Spring 2017 were combined for this analysis. Percent of success (%EM) is the combination of scores of “exceeds” and “meets” criteria. Comparison of students with fewer than 20 SCH (semester credit hours) shows significantly lower rates of success when compared with students who have earned at least 20 semester hours of college credit (T value: 3.8775E-06).

Objective:	Criteria:		16-17 <20SCH EM%	16-17 20+SCH EM%
CS1: Written Communication	Organization	CS1-1	83.47%	89.28%
	Development Support	CS1-2	79.46%	85.04%
	Language Skills	CS1-3	83.60%	88.89%
	Format	CS1-4	76.61%	82.55%
CS2: Oral Communication	Develop Support	CS2-1	83.86%	94.10%
	Express Ideas	CS2-2	80.61%	88.73%
CS3: Visual Communication	Develop Support	CS3-1	77.94%	86.55%
	Express Ideas	CS3-2	75.93%	86.15%
CT1: Generate/Communicate	Position	CT1-1	84.14%	88.19%
	Explanation	CT1-2	81.90%	86.76%
	Evidence	CT1-3	77.16%	81.93%
	Conclusion	CT1-4	81.67%	87.09%
CT 2-3: Analyze/Evaluate	Evidence	CT2-3-1	45.59%	48.01%
	Analysis	CT2-3-2	49.37%	51.81%
	Evaluation	CT2-3-3	53.22%	54.85%
	Synthesis	CT2-3-4	48.32%	51.00%
EQS 1: Numerical Data	Manipulate	EQS1-1	66.34%	75.17%
	Analyze	EQS1-2	64.66%	73.28%
	Conclusion	EQS1-3	62.71%	73.83%
EQS 2: Observable Facts	Manipulate	EQS2-1	66.05%	59.82%
	Analyze	EQS2-2	67.83%	61.78%
	Conclusion	EQS2-3	70.63%	63.90%
PR 1: Choices and Consequences	Identification	PR1-1	86.92%	88.69%
	Connection	PR1-2	86.33%	88.56%
	Response	PR1-3	85.89%	88.29%
SR 1: Intercultural Competence	Recognize elements	SR1-1	89.69%	92.76%

	Describe effects	SR1-2	87.47%	91.58%
SR 2: Civic Responsibility	Comprehend	SR2-1	86.18%	84.58%
	Reflect	SR2-2	86.71%	85.35%
	Communicate	SR2-3	87.38%	85.90%
SR 3: Communities	Awareness	SR3-1	83.98%	91.28%
	Impact	SR3-2	81.70%	90.36%
	Action	SR3-3	76.72%	85.67%
TW 1-2: Teamwork	Team Interaction	TW1-2-1	87.47%	93.47%
	Individual	TW1-2-2	87.35%	93.23%
	Purpose/Goal	TW1-2-3	86.81%	92.98%



***An error occurred in the processing of data from BIOL 2401 and 2402 which skewed the results for CT2-3 and EQS 2.**

Table 15: Combined Results: Communication Skills

Objective:	Criteria:	Not Met	Meets	Exceeds	
CS1: Written Communication	Organization	CS1-1	10.72%	56.34%	32.95%
	Development Support	CS1-2	14.96%	56.50%	28.53%
	Language Skills	CS1-3	11.11%	58.94%	29.95%
	Format	CS1-4	17.45%	55.18%	27.37%
CS2: Oral Communication	Develop Support	CS2-1	5.90%	54.78%	39.32%
	Express Ideas	CS2-2	11.27%	53.06%	35.66%
CS3: Visual Communication	Develop Support	CS3-1	13.45%	68.69%	17.85%
	Express Ideas	CS3-2	13.85%	68.41%	17.73%

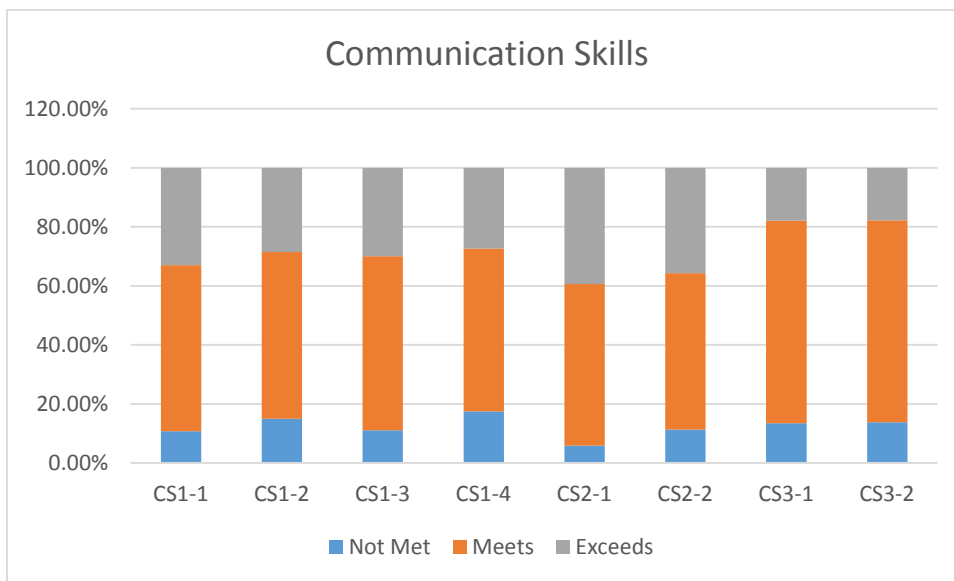
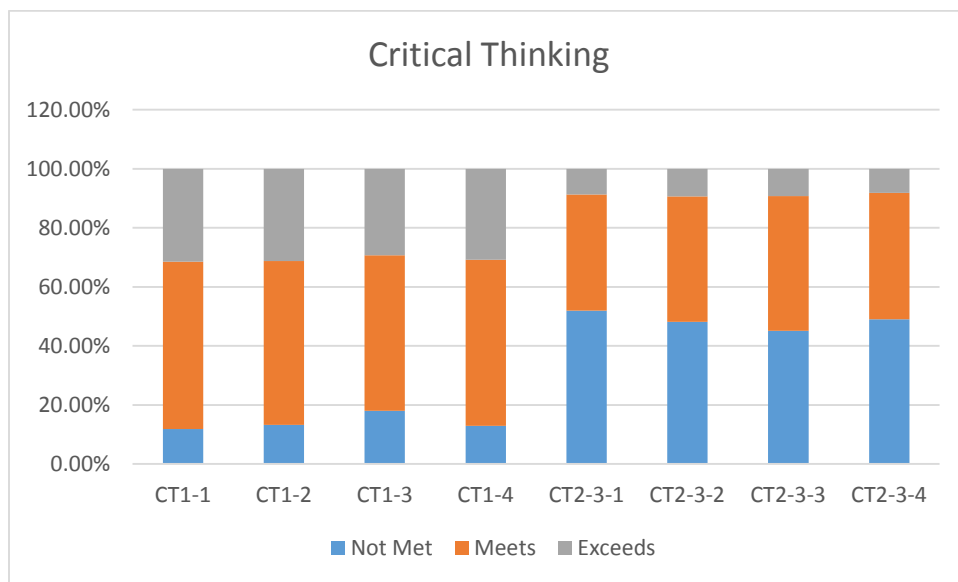


Table 16: Combined Results: Critical Thinking

Objective:	Criteria:	Not Met	Meets	Exceeds	
CT1: Generate/Communicate	Position	CT1-1	11.81%	56.72%	31.47%
	Explanation	CT1-2	13.24%	55.50%	31.27%
	Evidence	CT1-3	18.07%	52.60%	29.34%
	Conclusion	CT1-4	12.91%	56.27%	30.82%
CT 2-3: Analyze/Evaluate	Evidence	CT2-3-1	51.99%	39.33%	8.68%
	Analysis	CT2-3-2	48.19%	42.44%	9.37%
	Evaluation	CT2-3-3	45.15%	45.65%	9.20%
	Synthesis	CT2-3-4	49.00%	42.82%	8.18%



***An error occurred in the processing of data from BIOL 2401 and 2402 which skewed the results for CT2-3 and EQS 2.**

Table 17: Combined Results: Empirical and Quantitative Skills

Objective:	Criteria:	Not Met	Meets	Exceeds
EQS 1: Numerical Data	Manipulate	EQS1-1 24.83%	55.49%	19.68%
	Analyze	EQS1-2 26.72%	54.69%	18.60%
	Conclusion	EQS1-3 26.17%	53.00%	20.83%
EQS 2: Observable Facts	Manipulate	EQS2-1 40.18%	44.68%	15.14%
	Analyze	EQS2-2 38.22%	44.91%	16.87%
	Conclusion	EQS2-3 36.10%	47.14%	16.76%

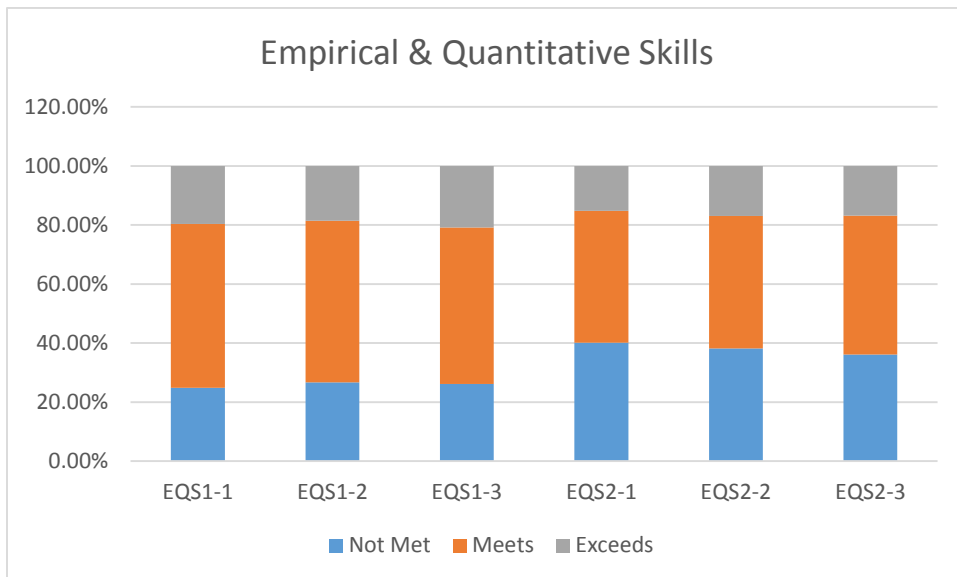


Table 18: Combined Results: Personal Responsibility

Objective:	Criteria:		Not Met	Meets	Exceeds
PR 1: Choices and Consequences	Identification	PR1-1	11.31%	56.99%	31.70%
	Connection	PR1-2	11.44%	57.14%	31.43%
	Response	PR1-3	11.71%	57.75%	30.54%

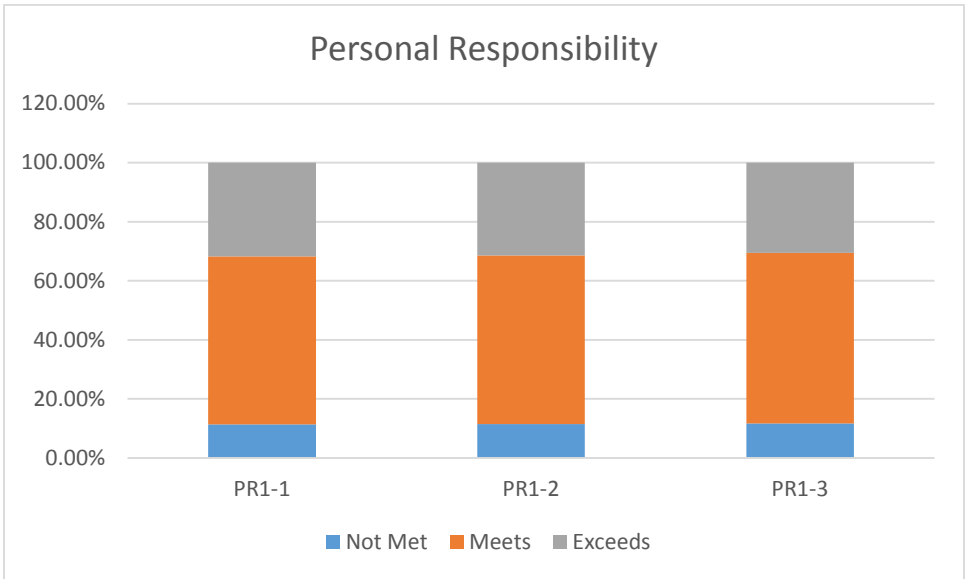


Table 19: Combined Results: Social Responsibility

Objective:	Criteria:		Not Met	Meets	Exceeds
SR 1: Intercultural Competence	Recognize elements	SR1-1	7.24%	58.16%	34.60%
	Describe effects	SR1-2	8.42%	59.79%	31.78%
SR 2: Civic Responsibility	Comprehend	SR2-1	15.42%	42.00%	42.58%
	Reflect	SR2-2	14.65%	45.89%	39.46%
	Communicate	SR2-3	14.10%	44.20%	41.71%
SR 3: Communities	Awareness	SR3-1	8.72%	59.62%	31.66%
	Impact	SR3-2	9.64%	59.66%	30.70%
	Action	SR3-3	14.33%	57.09%	28.58%

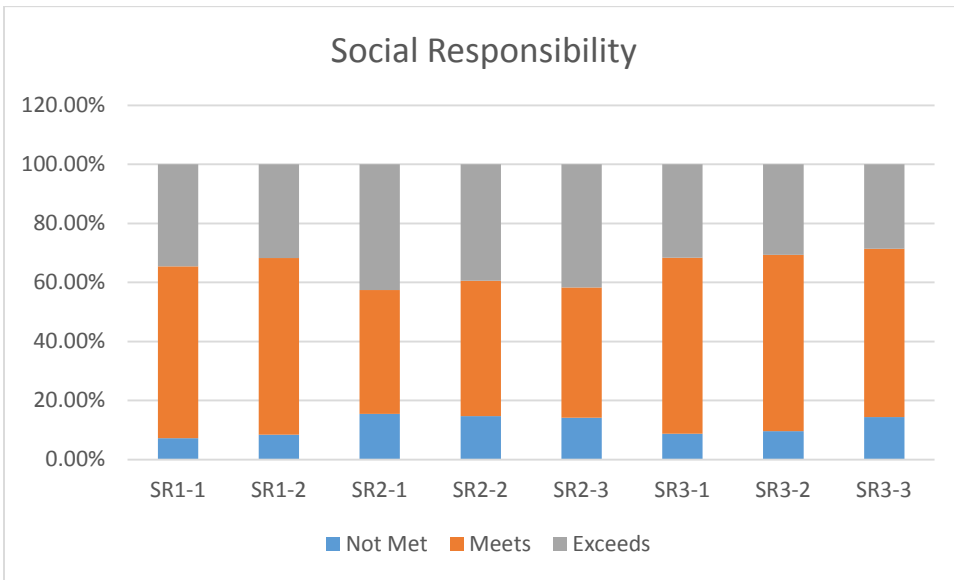


Table 20: Combined Results: Teamwork

Objective:	Criteria:		Not Met	Meets	Exceeds
TW 1-2: Teamwork	Team Interaction	TW1-2-1	6.53%	62.11%	31.36%
	Individual	TW1-2-2	6.77%	62.64%	30.59%
	Purpose/Goal	TW1-2-3	7.02%	62.26%	30.72%

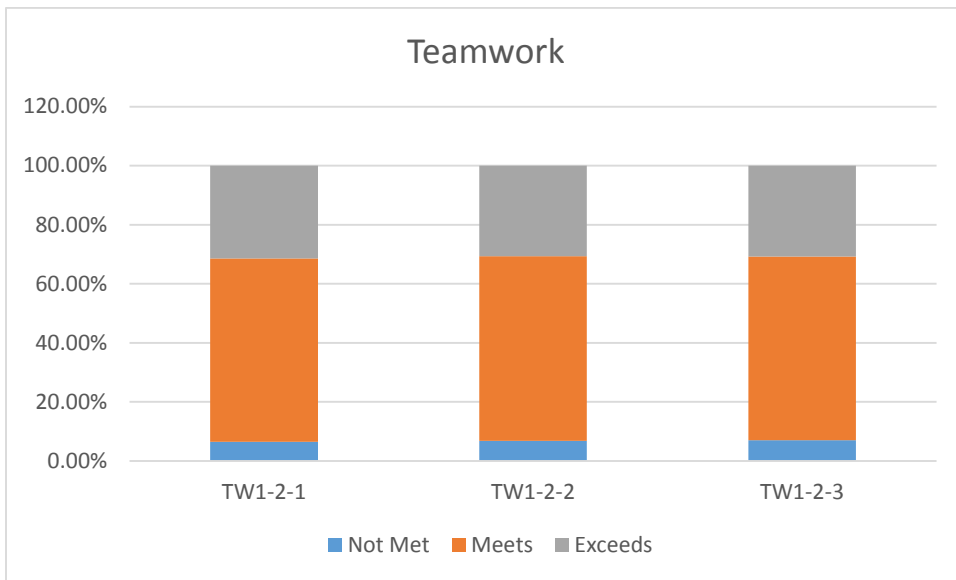


Table 21: Comparison of Spring 2015, Spring 2016, Spring 2017: Percentages of Success

Students who rated “exceeds” or “meets” criteria were compared from one spring semester to the next. The results from Spring 2015 and Spring 2016 are not significantly different (T value: 0.102635). The results from Spring 2016 and Spring 2017 shows significantly lower rates of success in Spring 2017 compared to Spring 2016 (T value: 5.91707E-07). The results from Spring 2015 and Spring 2017 shows significantly lower rates of success in Spring 2017 compared to Spring 2016 (T value: 1.15807E-05).

***An error occurred in the processing of data from BIOL 2401 and 2402 which skewed the results for CT2-3 and EQS 2.**

Outcome	Criteria	S15 EM %	S16 EM %	S17 EM %
CS1: Written Communication	Organization	92%	91%	86.72%
	Development Support	91%	87%	83.91%
	Language Skills	91%	89%	86.96%
	Format	89%	85%	81.70%
CS2: Oral Communication	Develop Support	94%	96%	91.97%
	Express Ideas	95%	97%	86.46%
CS3: Visual Communication	Develop Support	93%	91%	84.17%
	Express Ideas	93%	92%	83.07%
CT1: Generate/Communicate	Position	92%	91%	85.79%
	Explanation	91%	88%	84.25%
	Evidence	88%	84%	80.05%
	Conclusion	91%	89%	84.44%
CT 2-3: Analyze/Evaluate	Evidence	90%	65%	47.88%
	Analysis	89%	69%	51.56%
	Evaluation	88%	70%	54.84%
	Synthesis	88%	69%	50.41%
EQS 1: Numerical Data	Manipulate	81%	87%	70.50%
	Analyze	82%	87%	68.80%

	Conclusion	75%	91%	66.13%
EQS 2: Observable Facts	Manipulate	90%	74%	62.70%
	Analyze	90%	79%	64.10%
	Conclusion	89%	79%	65.75%
PR 1: Choices and Consequences	Identification	91%	90%	87.13%
	Connection	90%	90%	86.77%
	Response	90%	84%	86.45%
SR 1: Intercultural Competence	Recognize elements	87%	84%	90.76%
	Describe effects	88%	85%	89.94%
SR 2: Civic Responsibility	Comprehend	85%	96%	84.40%
	Reflect	83%	95%	85.52%
	Communicate	83%	90%	86.00%
SR 3: Communities	Awareness	96%	95%	87.37%
	Impact	94%	95%	85.64%
	Action	91%	95%	79.45%
TW 1-2: Teamwork	Team Interaction	92%	90%	91.43%
	Individual	92%	89%	91.37%
	Purpose/Goal	92%	90%	90.62%

Spring to Spring Comparison

