



TJC Relative Safety Assessment Report for Storm Events: Residential Life Buildings



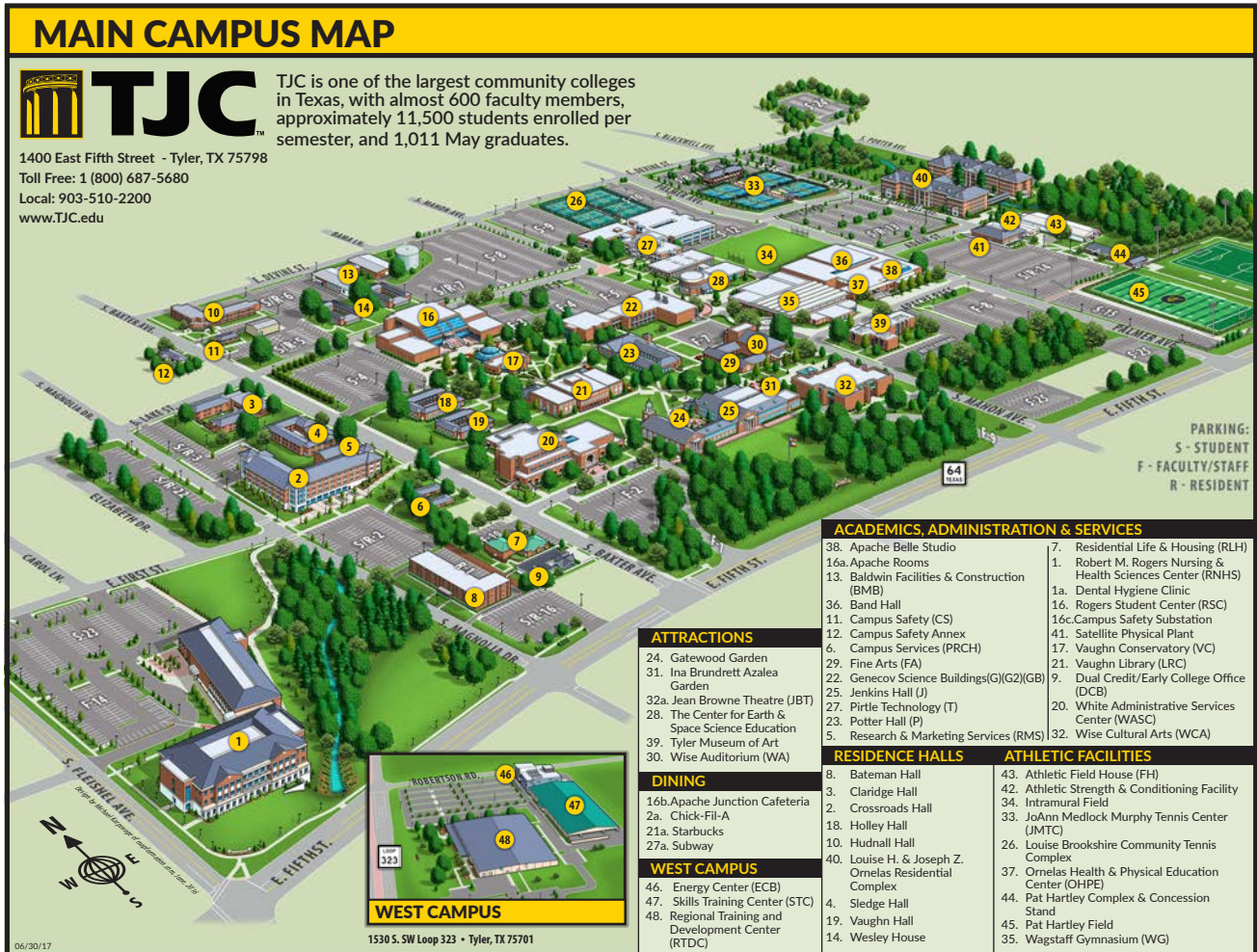
Summary

The following is a **relative** safety assessment survey campus wide for Tyler Junior College. This is a survey which does not recommend an absolute safe room or storm shelter, but enables the college to perform due diligence and complete a best practices assessment of the “relative safer place” to go in a storm event. There are no storm shelters on campus that meet the “Standard for Design and Construction of Storm Shelters - 2008”. The contents of this report are not recommendations for absolute safety in a storm event, but are recommendations which, following industry standards and best practices, would be the relatively safer places to shelter in the event of extreme weather. The professional opinion of this survey is that providing a recommendation for a relative safer place, based on available information, is better than the absence of a recommendation or plan in the case of a storm event. These recommendations are made in order to promote the health, safety and welfare of the occupants. Our assessments are based on general structural observations and the following recommended areas should not be construed as storm shelters or safe rooms but as areas that may be somewhat safer than other areas.

The following is a description of our findings.

Table of Contents

Summary	1
Table of Contents	2
Residential Life Building (see bldg numbers on map below for reference)	
Bateman Hall (8)	3
Claridge Hall (3)	4
Crossroads Hall (2)	5
Holley Hall (18)	7
Hudnall Hall (10)	8
Ornelas Hall (40)	9
Sledge Hall (4)	11
Vaughn Hall (19)	12
Wesley House (Lewis & West Halls) (14)	13



Use the campus map above to reference building number locations for the following building surveys.

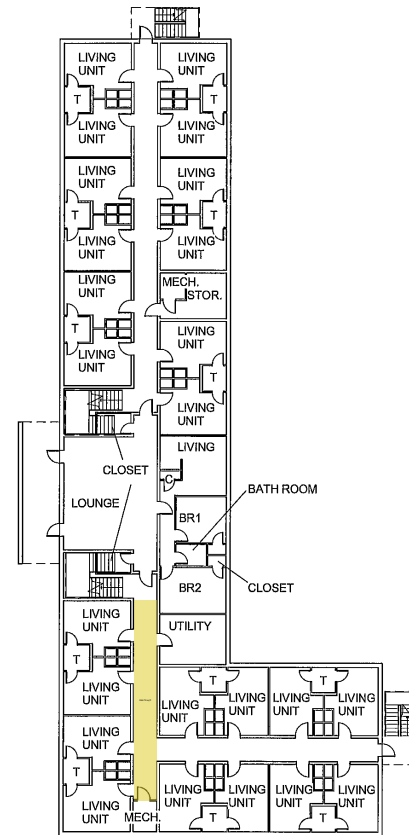
Bateman Hall



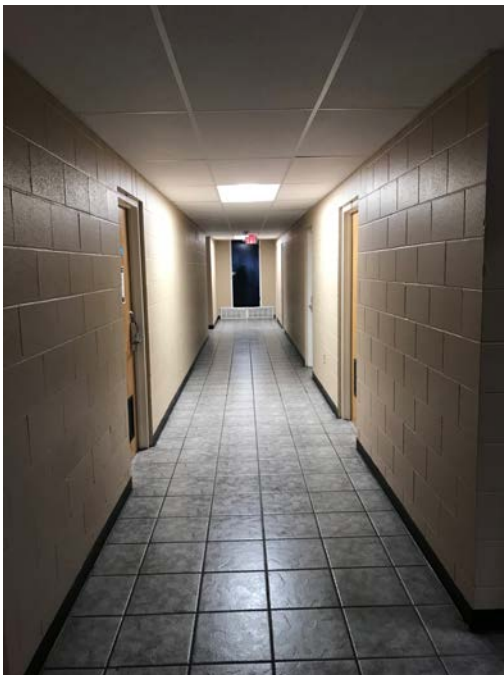
LEVELS: Three

CONSTRUCTION: Appears to be Concrete Masonry Unit (CMU) Block Construction with Brick Veneer.

(Assessments are based on general structural observations and the following recommended areas should not be construed as storm shelters or safe rooms but as areas that may be somewhat safer than other areas)



LEVELS 1 THROUGH 3 SIMILAR



RELATIVE SAFER AREA:

Southwest Corridor on Floors 1 through 3 away from windows.

OCCUPANT ESTIMATE:

53 occupants per level for a total of 160 total occupants located in relative safer areas during a storm event (Using 5 SF per occupant)



Claridge Hall



RELATIVE SAFER AREA:

Residential bathrooms and basement area east of stairwells

LEVELS: Two

CONSTRUCTION: Appears to be Concrete Masonry Unit (CMU) Block Construction with Brick Veneer.

(Assessments are based on general structural observations and the following recommended areas should not be construed as storm shelters or safe rooms but as areas that may be somewhat safer than other areas)

OCCUPANT ESTIMATE:

456 total occupants located in relative safer areas during a storm event. (Using 5 SF per occupant)

NOTES (5 SF per occupant):

- 10 occupants per restroom on each level (20 residential restrooms total all levels)
- 105 occupants in basement level laundry and corridor shown on diagram (2 total)
- 46 occupants in ground level restroom and corridor and restrooms on ground level shown on diagram



Crossroads Hall



LEVELS: Four

CONSTRUCTION: Load bearing Stud Construction with Brick Veneer

(Assessments are based on general structural observations and the following recommended areas should not be construed as storm shelters or safe rooms but as areas that may be somewhat safer than other areas)

RELATIVE SAFER AREA:

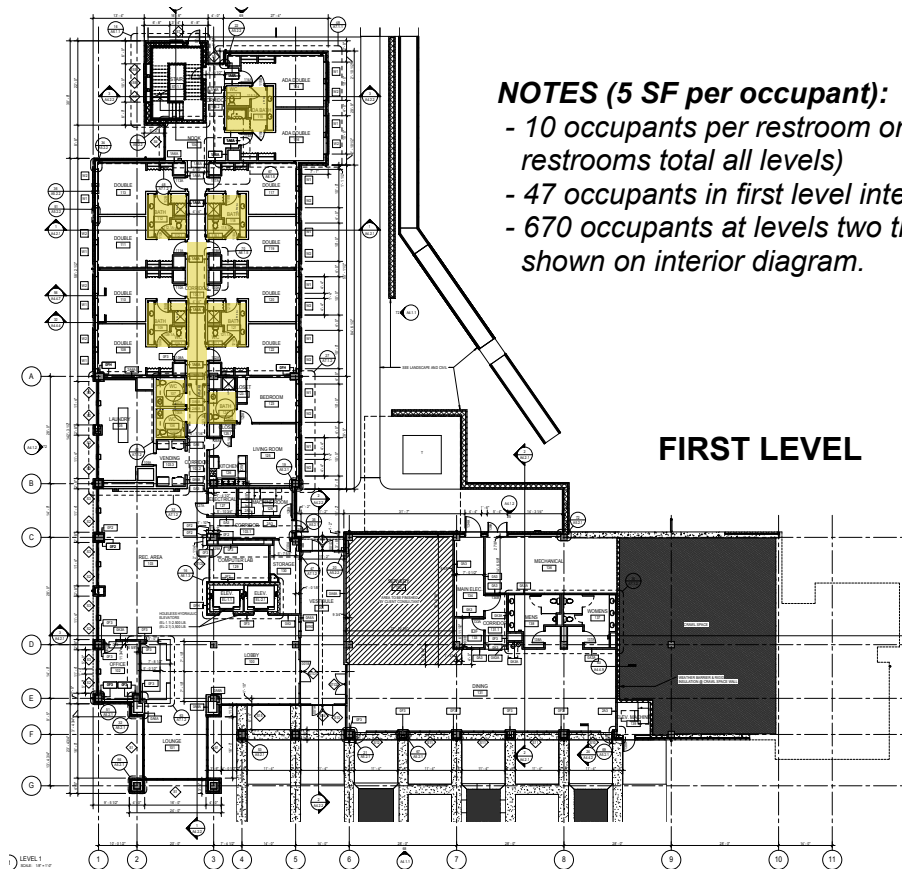
Residential bathrooms and interior corridors away from windows shown on diagrams.

OCCUPANT ESTIMATE:

1,352 total occupants located in relatively safer areas (using 5 SF per person)

NOTES (5 SF per occupant):

- 10 occupants per restroom on each level (63.5 residential restrooms total all levels)
- 47 occupants in first level interior corridor shown on diagram
- 670 occupants at levels two through four interior corridors shown on interior diagram.



FIRST LEVEL

Crossroads Hall



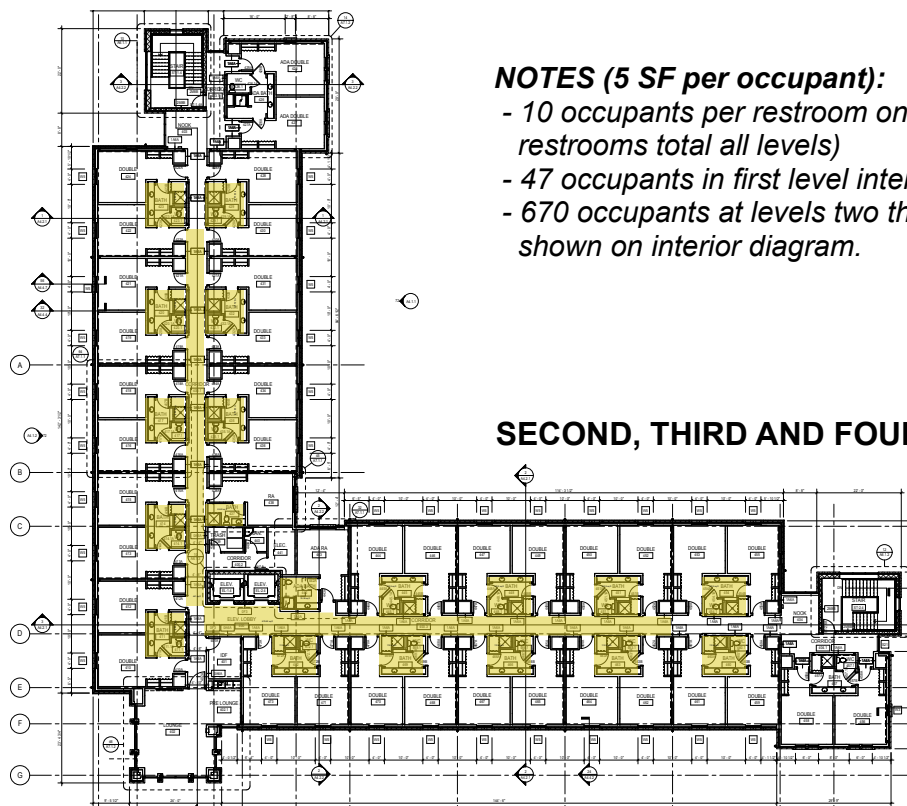
RELATIVE SAFER AREA:

Residential bathrooms and interior corridors away from windows shown on diagrams.

LEVELS: Four

CONSTRUCTION: Load bearing Stud Construction with Brick Veneer

(Assessments are based on general structural observations and the following recommended areas should not be construed as storm shelters or safe rooms but as areas that may be somewhat safer than other areas)



NOTES (5 SF per occupant):

- 10 occupants per restroom on each level (63.5 residential restrooms total all levels)
- 47 occupants in first level interior corridor shown on diagram
- 670 occupants at levels two through four interior corridors shown on interior diagram.

SECOND, THIRD AND FOURTH LEVELS SIMILAR



Holley Hall



LEVELS: Two

CONSTRUCTION: Appears to be load bearing masonry

(Assessments are based on general structural observations and the following recommended areas should not be construed as storm shelters or safe rooms but as areas that may be somewhat safer than other areas)

RELATIVE SAFER AREA:

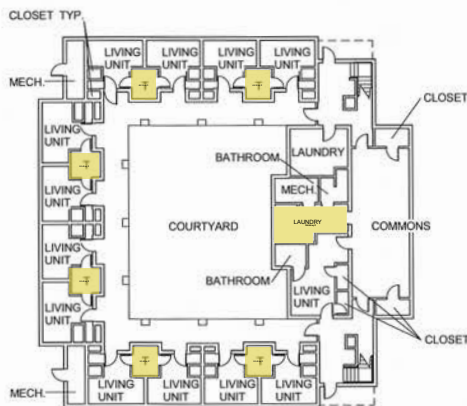
Residential bathrooms on all levels and laundry room on first level

OCCUPANT ESTIMATE:

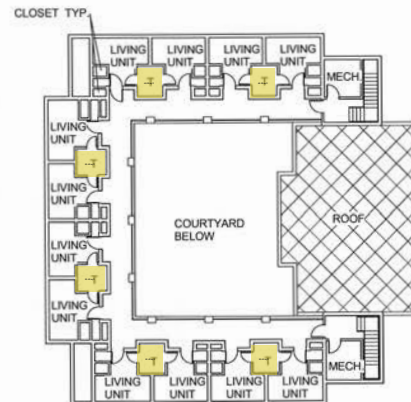
139 total occupants in relatively safer areas (at 5 SF per occupant)

NOTES (5 SF per occupant):

- 9 occupants per restroom on each level (12 residential restrooms total all levels)
- 31 occupants in laundry room on ground level



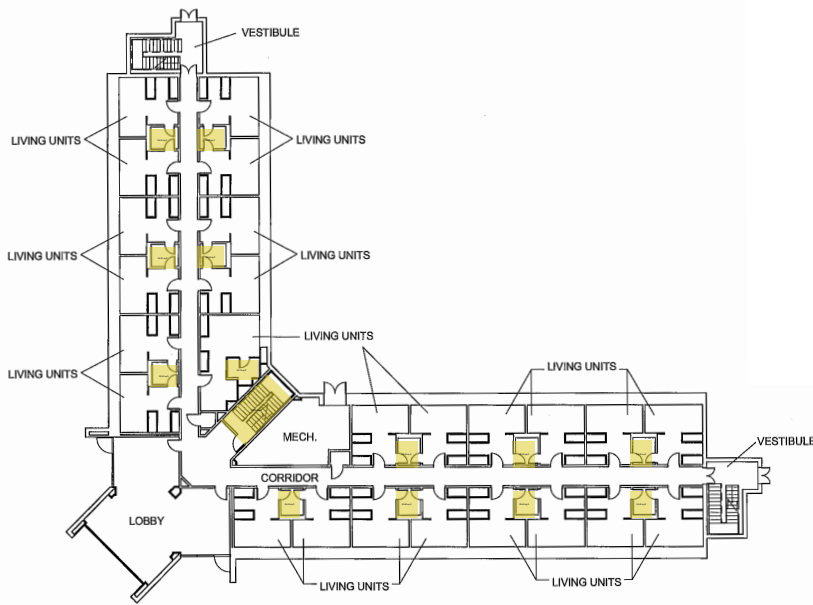
FIRST LEVEL



SECOND LEVEL



Hudnall Hall



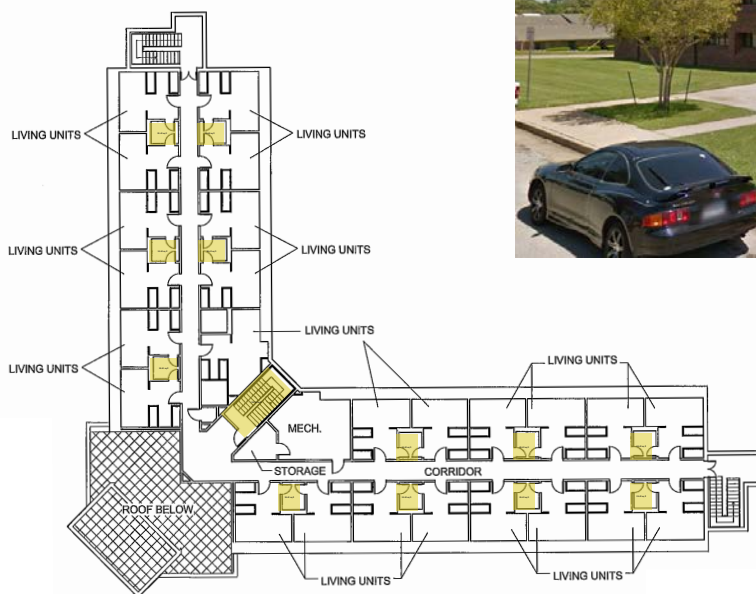
FIRST LEVEL

RELATIVE SAFER AREA:

Residential bathrooms on both levels and stairwell

OCCUPANT ESTIMATE:

260 total occupants in relatively safer areas (using 5 SF per occupant)



SECOND LEVEL

NOTES (5 SF per occupant):

- 8 occupants per restroom on each level (25 residential restrooms total all levels)
- 60 occupants in stairwell



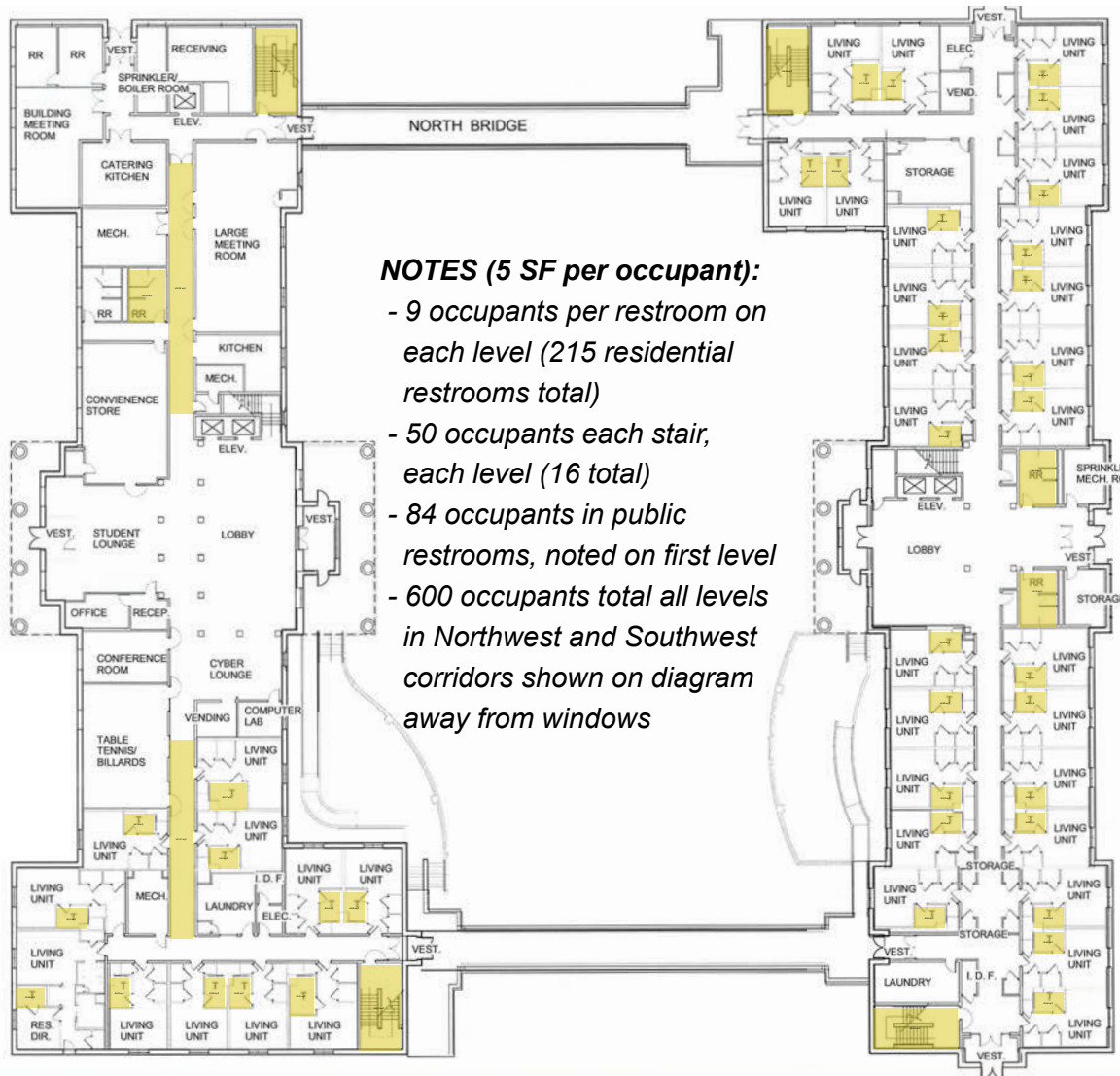
LEVELS: Two

CONSTRUCTION: Appears to be load bearing construction

(Assessments are based on general structural observations and the following recommended areas should not be construed as storm shelters or safe rooms but as areas that may be somewhat safer than other areas)



Ornelas Complex



FIRST LEVEL

RELATIVE SAFER AREA:

Egress stairwells shown on diagram, residential bathrooms on all levels interior corridors away from windows shown in diagram all levels, interior public restrooms shown in diagram on first level

LEVELS: Four

CONSTRUCTION: Appears to be a combination of conventional steel, and load bearing construction.

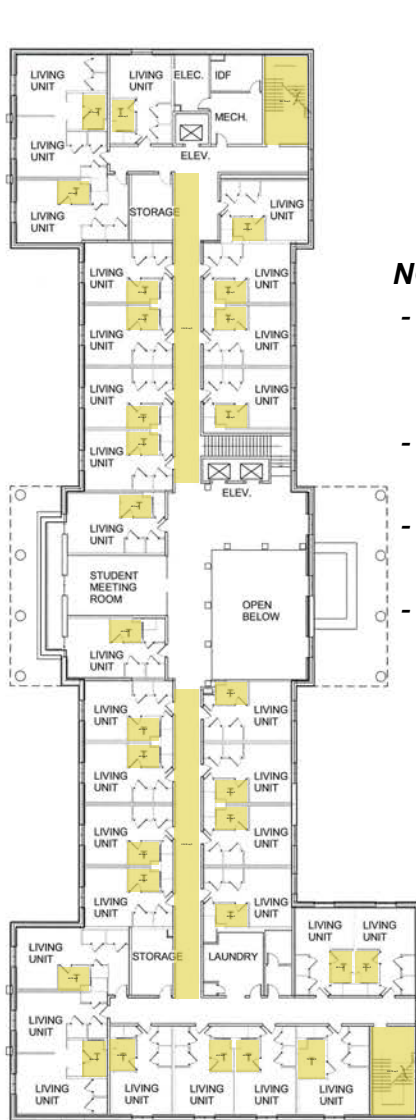
OCCUPANT ESTIMATE:

3,592 total occupants located in relatively safer areas (using 5 SF per occupant)

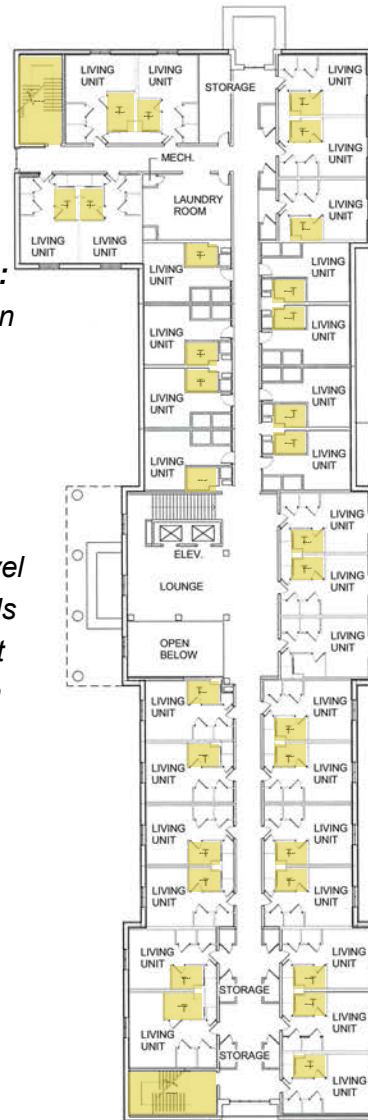
(Assessments are based on general structural observations and the following recommended areas should not be construed as storm shelters or safe rooms but as areas that may be somewhat safer than other areas)



Ornelas Complex



- NOTES (5 SF per occupant):**
- 9 occupants per restroom on each level (215 residential restrooms total)
 - 50 occupants each stair, each level (16 total)
 - 84 occupants in public restrooms, noted on first level
 - 600 occupants total all levels in Northwest and Southwest corridors shown on diagram away from windows



SECOND, THIRD AND FOURTH LEVELS SIMILAR



Sledge Hall



RELATIVE SAFER AREA:

Residential bathrooms and small kitchen/bath area shown on diagram off of RA room

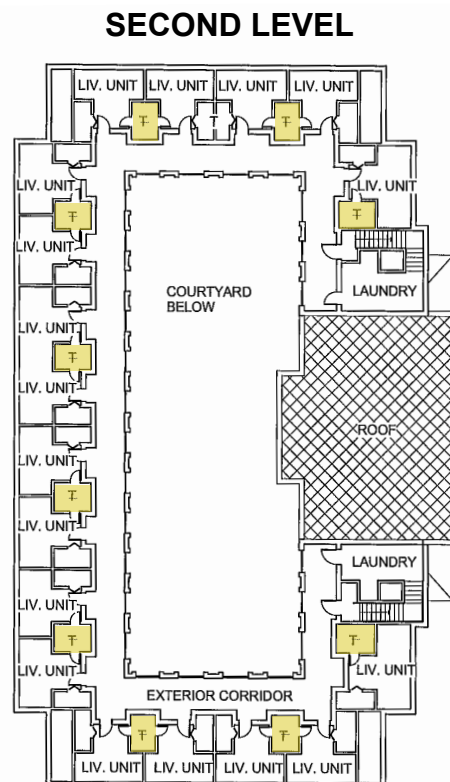
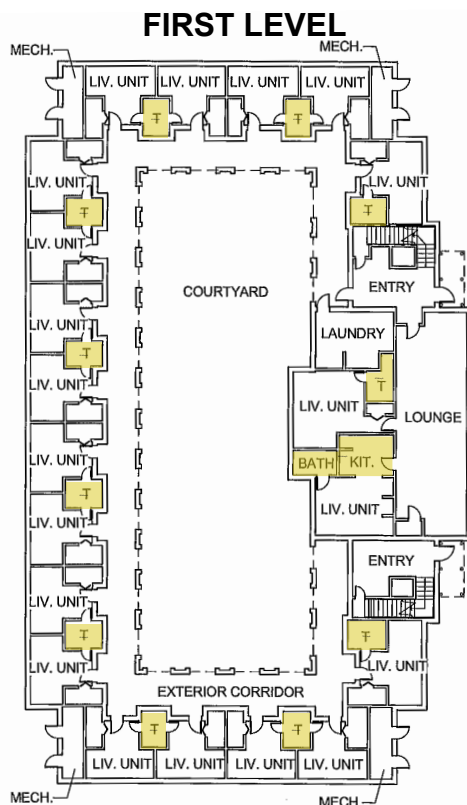
LEVELS: Two

CONSTRUCTION: Appears to be load bearing construction

(Assessments are based on general structural observations and the following recommended areas should not be construed as storm shelters or safe rooms but as areas that may be somewhat safer than other areas)

OCCUPANT ESTIMATE:

296 total occupants located in relatively safer areas during an extreme storm event (using 5 SF per occupant)



NOTES (5 SF per occupant):

- 12 occupants per restroom on each level (21 residential restrooms total all levels)
- 44 occupants at first level kitchen/bath area off of RA room shown on diagram



Vaughn Hall



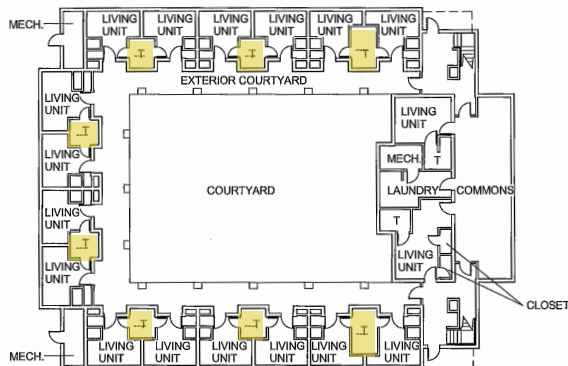
LEVELS: Two

CONSTRUCTION: Appears to be load bearing construction

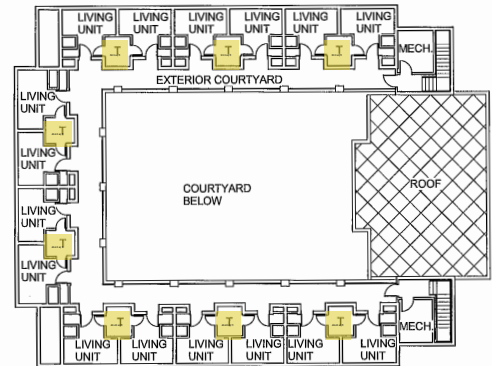
(Assessments are based on general structural observations and the following recommended areas should not be construed as storm shelters or safe rooms but as areas that may be somewhat safer than other areas)

RELATIVE SAFER AREA:
Residential bathrooms

OCCUPANT ESTIMATE:
160 total occupants in
relative safer areas (at 5 SF
per occupant)



FIRST LEVEL



SECOND LEVEL



NOTES (5 SF per occupant):

- 10 occupants per restroom on each level (16 residential restrooms total all levels)



Wesley House (Lewis and West Halls)



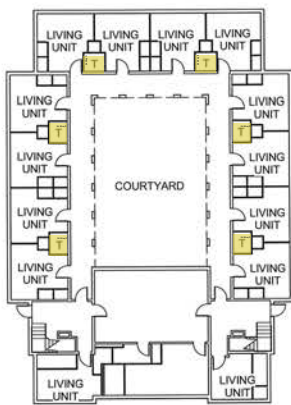
LEVELS: Two

CONSTRUCTION: Appears to be load-bearing construction

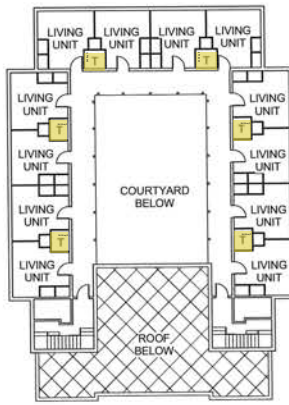
(Assessments are based on general structural observations and the following recommended areas should not be construed as storm shelters or safe rooms but as areas that may be somewhat safer than other areas)

RELATIVE SAFER AREA:
Residential bathrooms

OCCUPANT ESTIMATE:
60 total occupants in relative safer areas (at 5 SF per occupant)



FIRST LEVEL



SECOND LEVEL

NOTES (5 SF per occupant):

- 5 occupants per restroom on each level (12 residential restrooms total all levels)

