



## TJC Relative Safety Assessment Report for Storm Events: Academic, Amenity, and Athletic Buildings

---



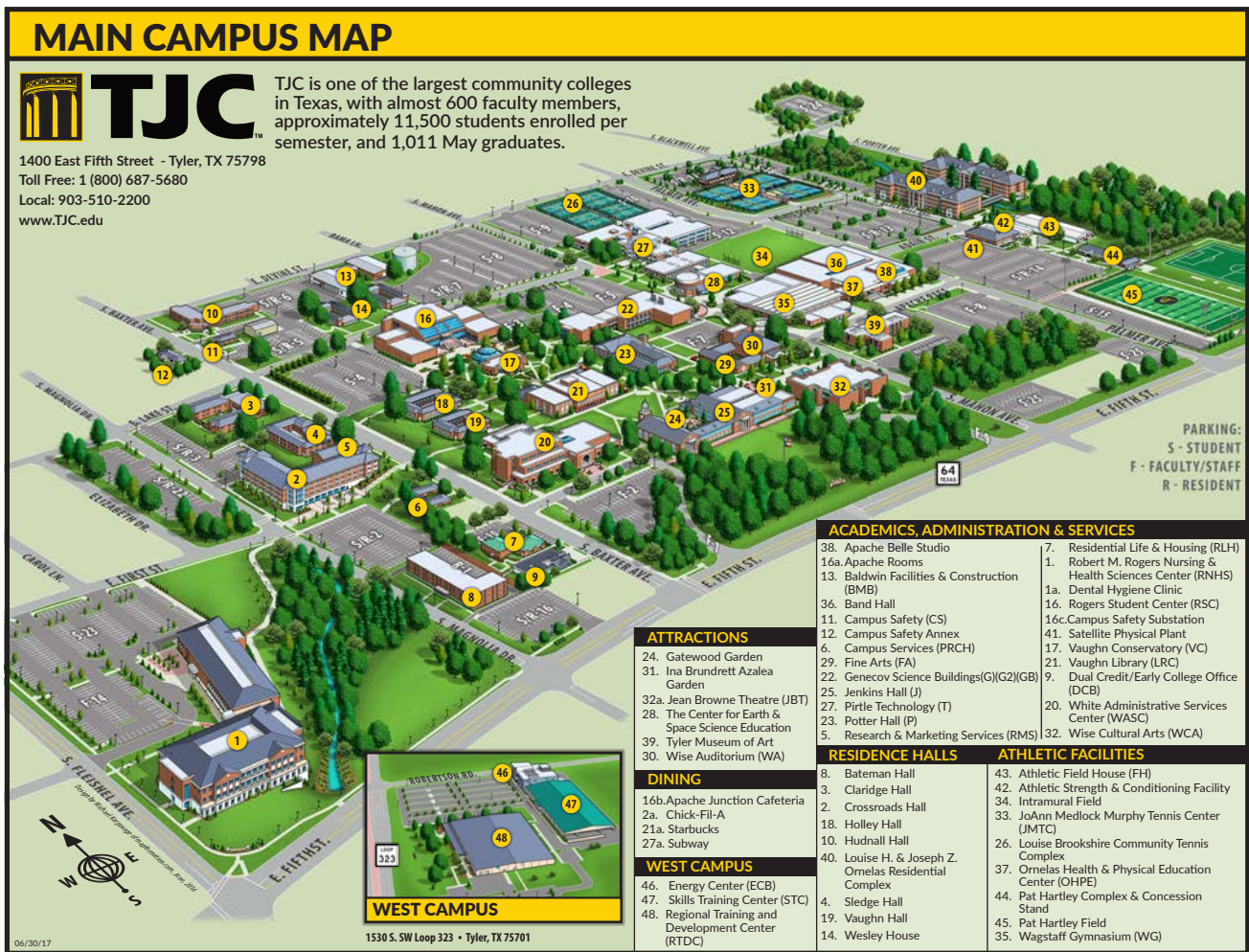
### Summary

The following is a **relative** safety assessment survey campus wide for Tyler Junior College. This is a survey which does not recommend an absolute safe room or storm shelter, but enables the college to perform due diligence and complete a best practices assessment of the “relative safer place” to go in a storm event. There are no storm shelters on campus that meet the “Standard for Design and Construction of Storm Shelters - 2008”. The contents of this report are not recommendations for absolute safety in a storm event, but are recommendations which, following industry standards and best practices, would be the relatively safer places to shelter in the event of extreme weather. The professional opinion of this survey is that providing a recommendation for a relative safer place, based on available information, is better than the absence of a recommendation or plan in the case of a storm event. These recommendations are made in order to promote the health, safety and welfare of the occupants. Our assessments are based on general structural observations and the following recommended areas should not be construed as storm shelters or safe rooms but as areas that may be somewhat safer than other areas.

The following is a description of our findings.

# Table of Contents

Summary	1
Table of Contents	2
Academic and Amenity Buildings <i>(see bldg numbers on map below for reference)</i>	
Athletic Field House (43)	3
Athletic Strength and Conditioning Facility (42)	4
The Center for Earth and Space Science Education (28)	5
Genecov Science Building (22)	6
Jenkins Hall (25)	9
JoAnn Medlock Murphy Tennis Center (33)	11
OHPE (37)	12
Pat Hartley Complex and Concession Stand (44)	13
Pirtle Technology (27)	14
Potter Hall (23)	18
Rogers Nursing and Health Science Center (1)	19
Rogers Student Center (16)	23
Tyler Museum of Art (39)	26
Vaughn Conservatory (17)	27
Vaughn Library (17)	28
Wagstaff Gym (35)	29
Wise Auditorium (30)	30
Wise Cultural Arts (32)	31



Use the campus map above to reference building number locations for the following building surveys.

## Athletic Field House



**LEVELS:** One

**CONSTRUCTION:** Pre-Engineered Metal Building

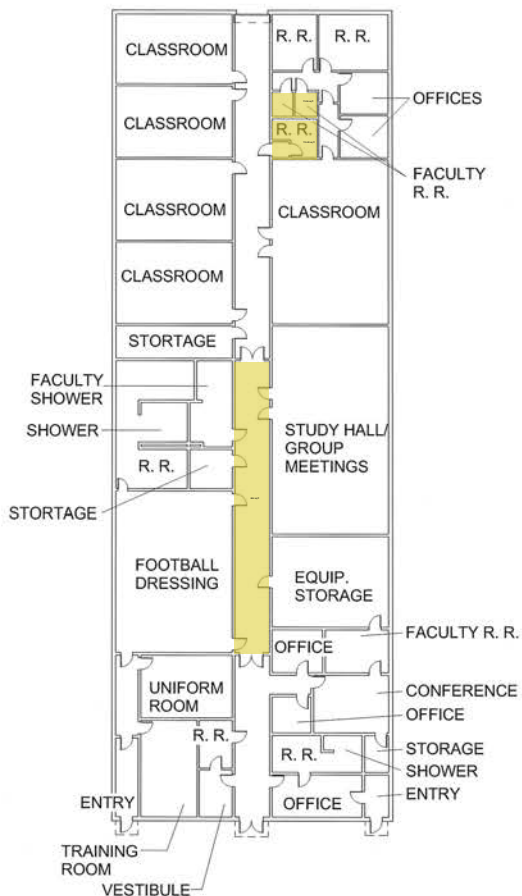
(Assessments are based on general structural observations and the following recommended areas should not be construed as storm shelters or safe rooms but as areas that may be somewhat safer than other areas)

### RELATIVE SAFER AREA:

Interior corridor away from windows and north restrooms

### OCCUPANT ESTIMATE:

173 total occupants located in relatively safer areas (using 5 SF per person)



### NOTES (5 SF per occupant):

- 5 occupants per corridor at 684 SF = 136 occupants
- 5 occupants per restrooms at 188 SF = 37 occupants

## Athletic Strength and Conditioning Facility



**RELATIVE SAFER AREA:**  
Interior Restrooms

**LEVELS:** One

**CONSTRUCTION:** Pre-Engineered Metal Building

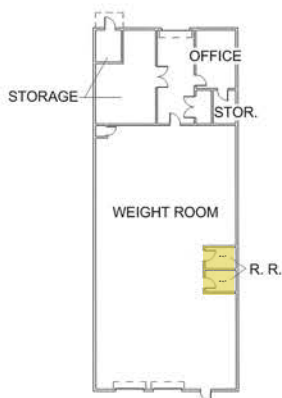
(Assessments are based on general structural observations and the following recommended areas should not be construed as storm shelters or safe rooms but as areas that may be somewhat safer than other areas)

**OCCUPANT ESTIMATE:**

19 total occupants located in relatively safer areas (using 5 SF per person)

**NOTES (5 SF per occupant):**

- Restrooms = 96 total SF = 19 occupants



## The Center for Earth and Space Science Education



**LEVELS:** Two

**CONSTRUCTION:** Appears to be conventional steel construction

*(Assessments are based on general structural observations and the following recommended areas should not be construed as storm shelters or safe rooms but as areas that may be somewhat safer than other areas)*

**NOTES (5 SF per occupant):**

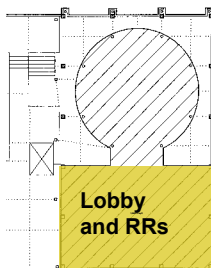
- Basement = 1,068 SF = 213 occupants
- First floor = 268 SF = 53 occupants

**RELATIVE SAFER AREA:**

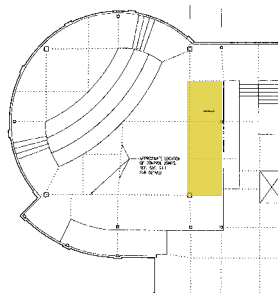
Interior room at control area of planetarium on ground level. Restrooms and lobby on basement level.

**OCCUPANT ESTIMATE:**

266 total occupants located in relatively safer areas (using 5 SF per person)



**BASEMENT LEVEL**



**FIRST LEVEL**

Interior control area of planetarium



## Genecov Science Building



**LEVELS:** Two plus basement level

**CONSTRUCTION:** Unknown

*(Assessments are based on general structural observations and the following recommended areas should not be construed as storm shelters or safe rooms but as areas that may be somewhat safer than other areas)*

### RELATIVE SAFER AREA:

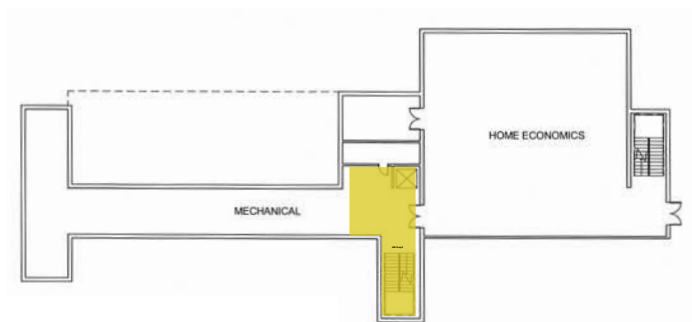
Restrooms and Corridors  
away from windows;  
Classrooms shown on  
diagrams below

### OCCUPANT ESTIMATE:

1,095 total occupants  
located in relatively safer  
areas (using 5 SF per  
person)

### NOTES at basement level (5 SF per occupant):

- Stair and Elevator Lobby = 490 SF = 98 occupants



### BASEMENT LEVEL



## Genecov Science Building



### RELATIVE SAFER AREA:

Restrooms and Corridors  
away from windows;  
Classrooms shown on  
diagrams below

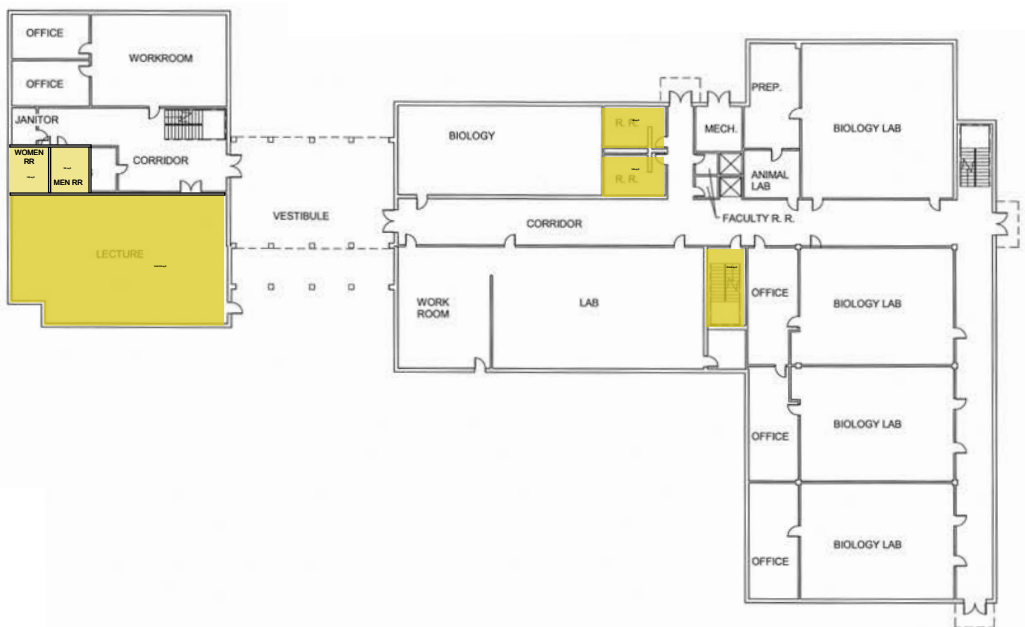
**LEVELS:** Two plus basement level

**CONSTRUCTION:** Unknown

(Assessments are based on general structural observations and the following recommended areas should not be construed as storm shelters or safe rooms but as areas that may be somewhat safer than other areas)

### NOTES at first level (5 SF per occupant):

- West Restrooms = 240 SF = 48 occupants
- Lecture Room = 1,842 SF = 368 occupants
- Central Restrooms = 332 SF = 66 occupants
- Central Stair = 195 SF = 39 occupants



FIRST LEVEL

## Genecov Science Building



### RELATIVE SAFER AREA:

Restrooms and Corridors  
away from windows;  
Classrooms shown on  
diagrams below

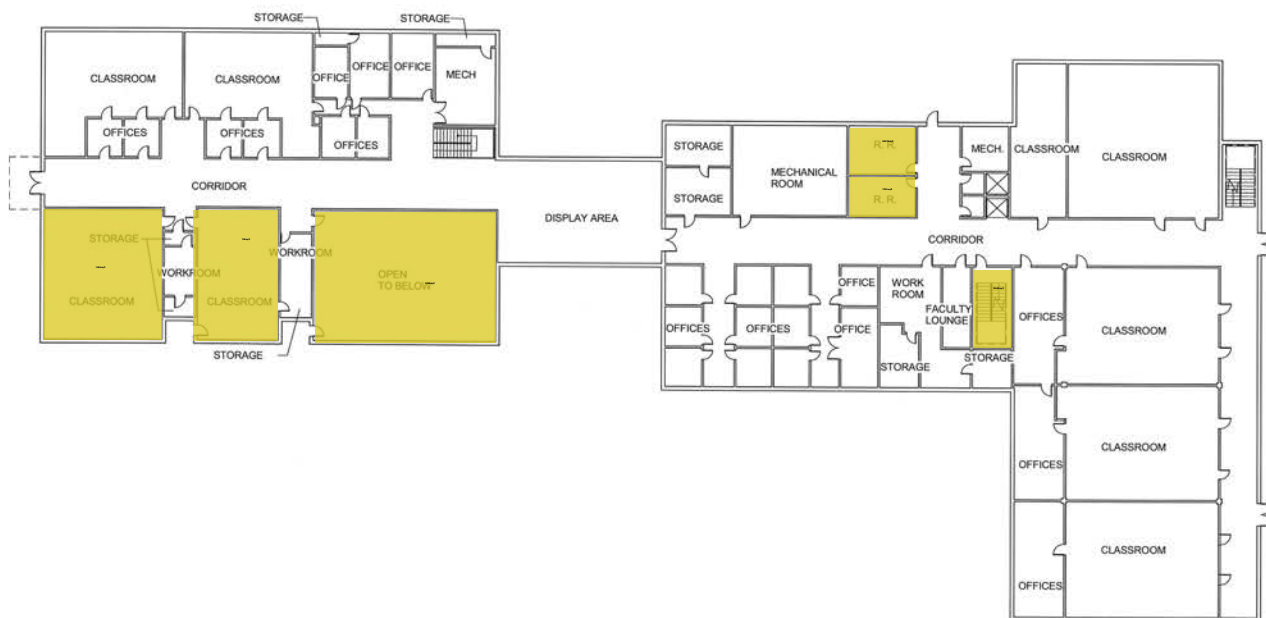
**LEVELS:** Two plus basement level

**CONSTRUCTION:** Unknown

(Assessments are based on general structural observations and the following recommended areas should not be construed as storm shelters or safe rooms but as areas that may be somewhat safer than other areas)

### NOTES at Second Level (5 SF per occupant):

- Southwest Classrooms = 1,802 SF = 360 occupants
- Central Restrooms = 386 SF = 77 occupants
- Central Stair = 195 SF = 39 occupants



### SECOND LEVEL



## Jenkins Hall



**LEVELS:** Two

**CONSTRUCTION:** Appears to be load bearing stud construction with brick veneer

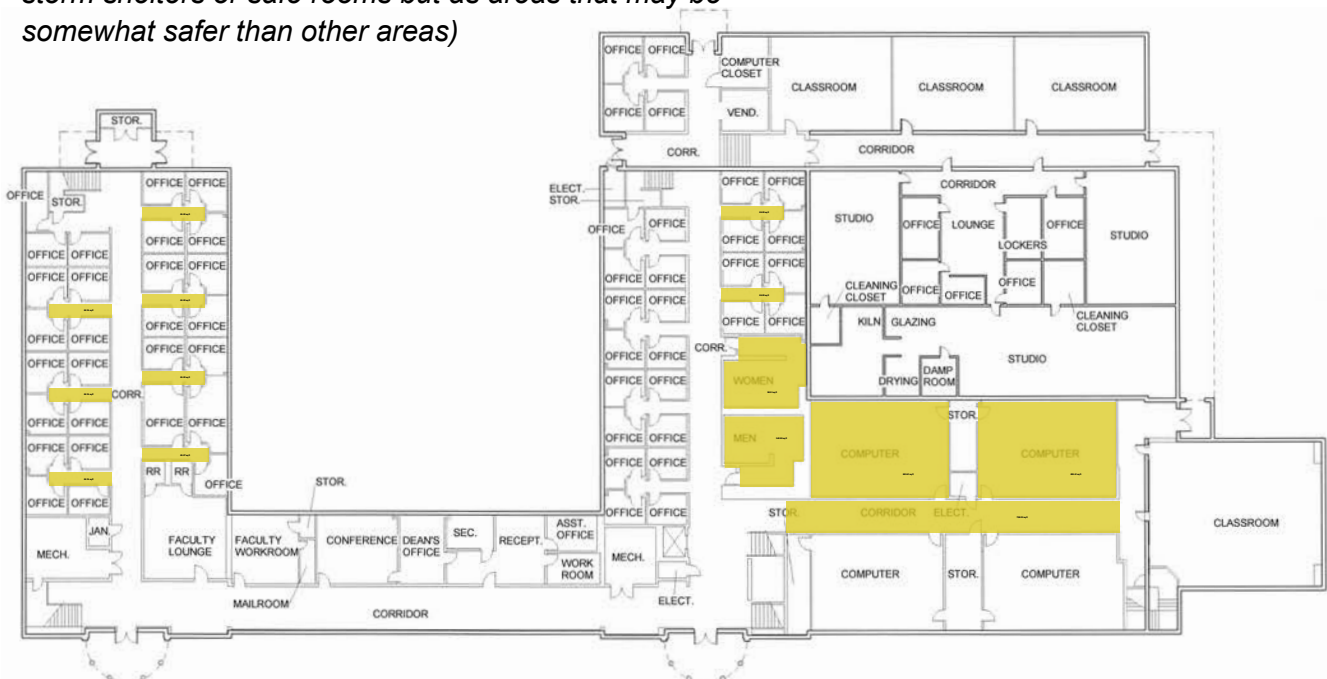
(Assessments are based on general structural observations and the following recommended areas should not be construed as storm shelters or safe rooms but as areas that may be somewhat safer than other areas)

### RELATIVE SAFER AREA:

Restrooms and interior alcoves at offices on both levels. Computer labs also serve as safer places on first floor.

### OCCUPANT ESTIMATE:

978 total occupants located in relatively safer areas (using 5 SF per person)



### FIRST LEVEL

#### NOTES: FIRST FLOOR (5 SF per occupant):

- Interior office corridors = 55 SF each x 9 = 99 total occupants
- Central restrooms = 700 SF = 140 occupants
- Southeast Corridor = 708 SF = 141 occupants
- Interior Computer Labs = 893 SF each x 2 = 357 occupants



## Jenkins Hall



### RELATIVE SAFER AREA:

Restrooms and interior alcoves at offices on both levels. Computer labs also serve as safer places on first floor.



### SECOND LEVEL

#### NOTES (5 SF per occupant):

- Northwest Corridor = 464 SF = 92 occupants
- Southwest Restroom = 278 SF = 55 occupants
- Central Restrooms = 473 SF = 94 occupants



## JoAnn Medlock Murphy Tennis Center



**RELATIVE SAFER AREA:**  
Interior restrooms

**OCCUPANT ESTIMATE:**  
106 total occupants located  
in relatively safer areas (at 5  
SF per occupant)

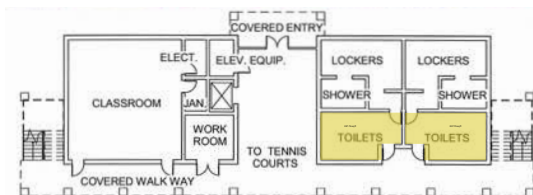
**LEVELS:** Two

**CONSTRUCTION:** Conventional Steel Construction

*(Assessments are based on general structural observations  
and the following recommended areas should not be construed  
as storm shelters or safe rooms but as areas that may be  
somewhat safer than other areas)*

**NOTES (5 SF per occupant):**

- First Floor Restrooms = 474 SF = 94 occupants
- Second Floor Restrooms = 64 SF = 12 occupants



**FIRST LEVEL**



**SECOND LEVEL**



## OHPE - Ornelas Health and Physical Education Center



**LEVELS:** Two

**CONSTRUCTION:** Appears to be conventional steel

(Assessments are based on general structural observations and the following recommended areas should not be construed as storm shelters or safe rooms but as areas that may be somewhat safer than other areas)

### RELATIVE SAFER AREA:

Locker room spaces on the first level

### OCCUPANT ESTIMATE:

947 total occupants in relatively safer areas (using 5 SF per occupant)

### NOTES (5 SF per occupant):

- Women's Locker Room = 2,783 SF = 556 occupants
- Men's Locker Room = 1,958 SF = 391 occupants



## Pat Hartley Complex; Concession Stand



**LEVELS:** One

**CONSTRUCTION:** Unknown

*(Assessments are based on general structural observations and the following recommended areas should not be construed as storm shelters or safe rooms but as areas that may be somewhat safer than other areas)*

**NOTES (5 SF per occupant):**

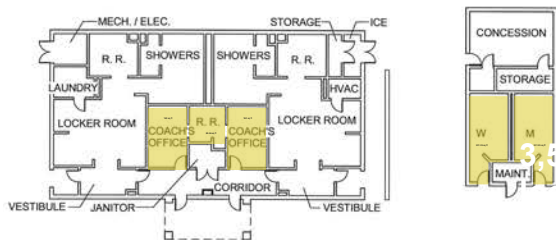
- Coaches Offices / Restroom = 405 SF = 81 occupants
- Concession Restrooms = 402 SF = 80 occupants

**RELATIVE SAFER AREA:**

Interior bathrooms and  
coach's offices

**OCCUPANT ESTIMATE:**

161 total occupants located  
in relatively safer areas  
(using 5 SF per person)



**FIRST LEVEL**



## Pirtle Technology



**LEVELS:** Three Levels

**CONSTRUCTION:** Appears to be conventional steel construction

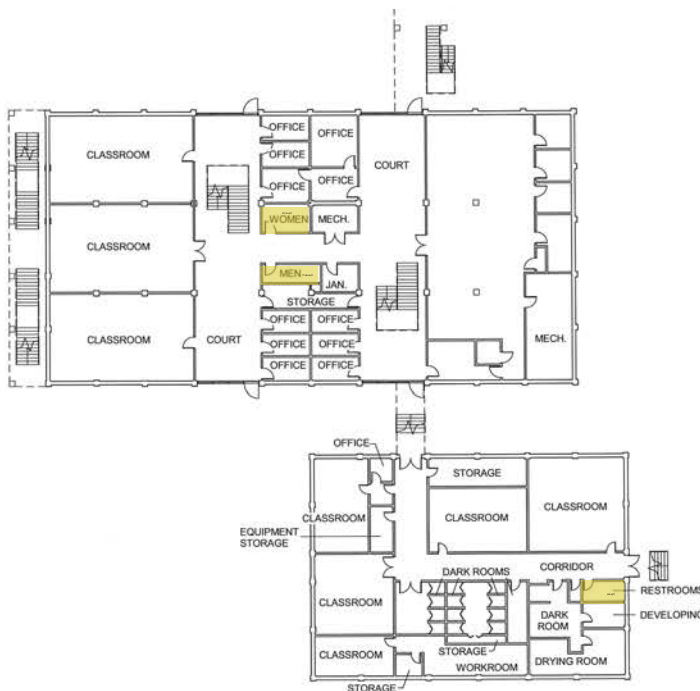
(Assessments are based on general structural observations and the following recommended areas should not be construed as storm shelters or safe rooms but as areas that may be somewhat safer than other areas)

### RELATIVE SAFER AREA:

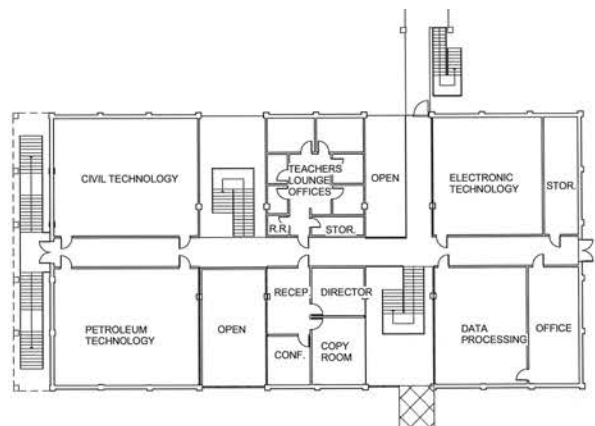
Interior bathrooms and corridors away from windows.

### OCCUPANT ESTIMATE:

820 total occupants located in relatively safer areas (using 5 SF per occupant)



**FIRST LEVEL SOUTH**



**SECOND LEVEL SOUTH**

**NO recommended areas this level**

### NOTES (5 SF per occupant):

- Southeast Restroom = 66 SF = 13 occupants
- Central Restrooms = 158 SF = 31 occupants



## Pirtle Technology



**FIRST LEVEL NORTH**

**NOTES (5 SF per occupant):**

- Northwest Restroom = 166 SF = 33 occupants
- Central Restrooms = 210 SF = 42 occupants



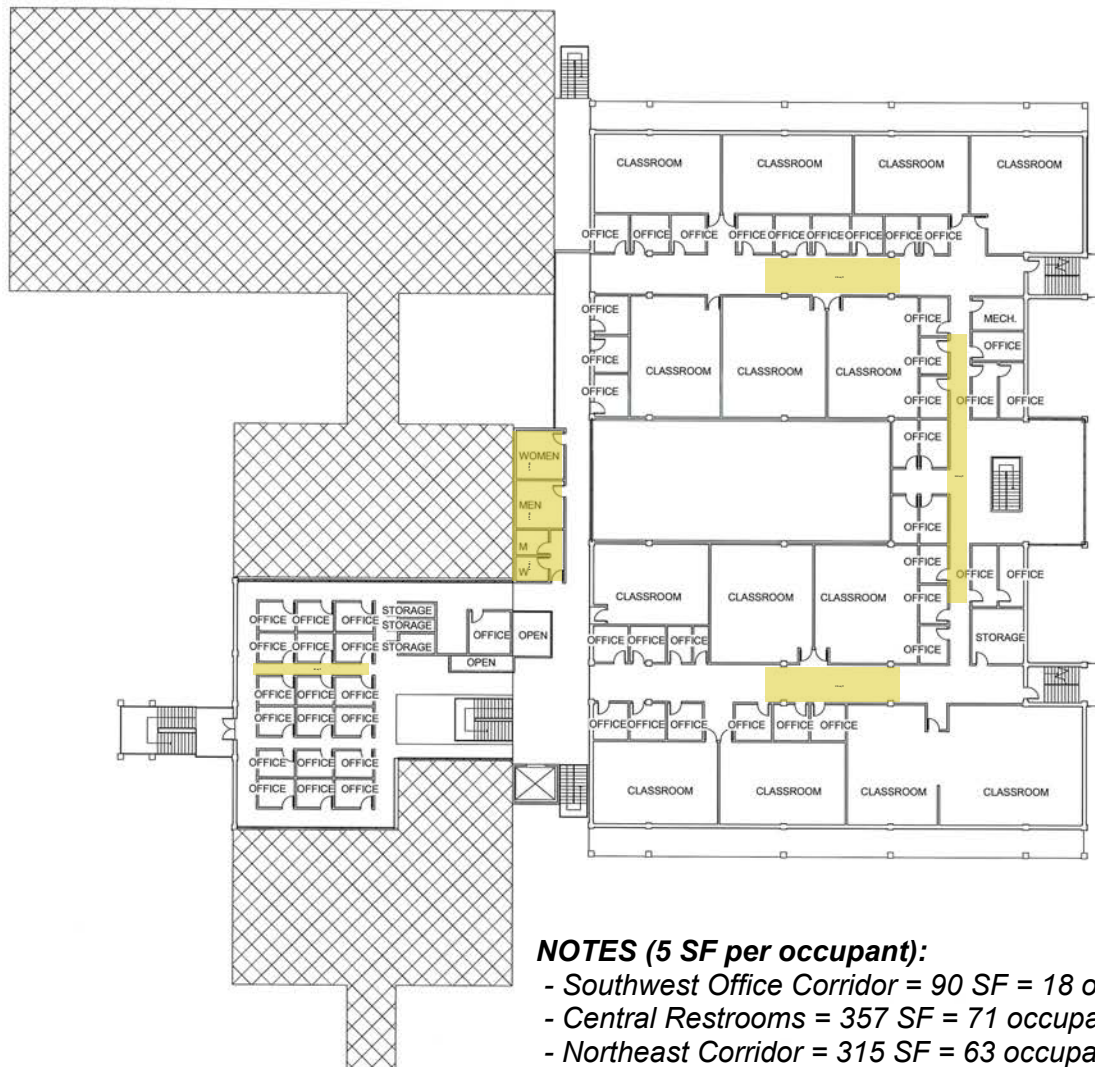
## Pirtle Technology



**SECOND LEVEL NORTH**



## Pirtle Technology



THIRD LEVEL NORTH

**NOTES (5 SF per occupant):**

- Southwest Office Corridor = 90 SF = 18 occupants
- Central Restrooms = 357 SF = 71 occupants
- Northeast Corridor = 315 SF = 63 occupants
- Southeast Corridor = 315 SF = 63 occupants
- East Corridor = 350 SF = 70 occupants



## Potter Hall



**LEVELS:** Two plus basement

**CONSTRUCTION:** Unknown

(Assessments are based on general structural observations and the following recommended areas should not be construed as storm shelters or safe rooms but as areas that may be somewhat safer than other areas)

### NOTES (5 SF per occupant):

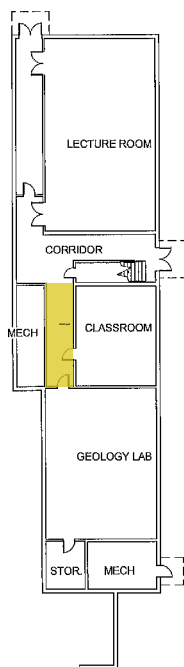
- BASEMENT: West Corridor = 191 SF = 38 occupants
- FIRST FLOOR: North Corridor = 476 SF = 95 occupants

### RELATIVE SAFER AREA:

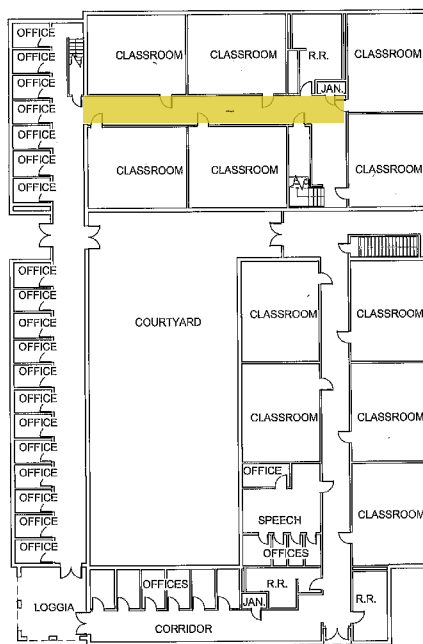
Interior bathrooms and corridors away from windows

### OCCUPANT ESTIMATE:

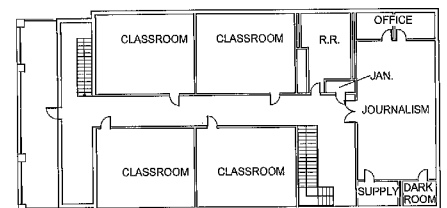
133 total occupants in relative safer areas (at 5 SF per occupant)



**BASEMENT LEVEL**



**FIRST LEVEL**



**SECOND LEVEL**



## Rogers Nursing and Health Science Center



**LEVELS:** Four

**CONSTRUCTION:** Appears to be conventional steel construction

(Assessments are based on general structural observations and the following recommended areas should not be construed as storm shelters or safe rooms but as areas that may be somewhat safer than other areas)

### RELATIVE SAFER AREA:

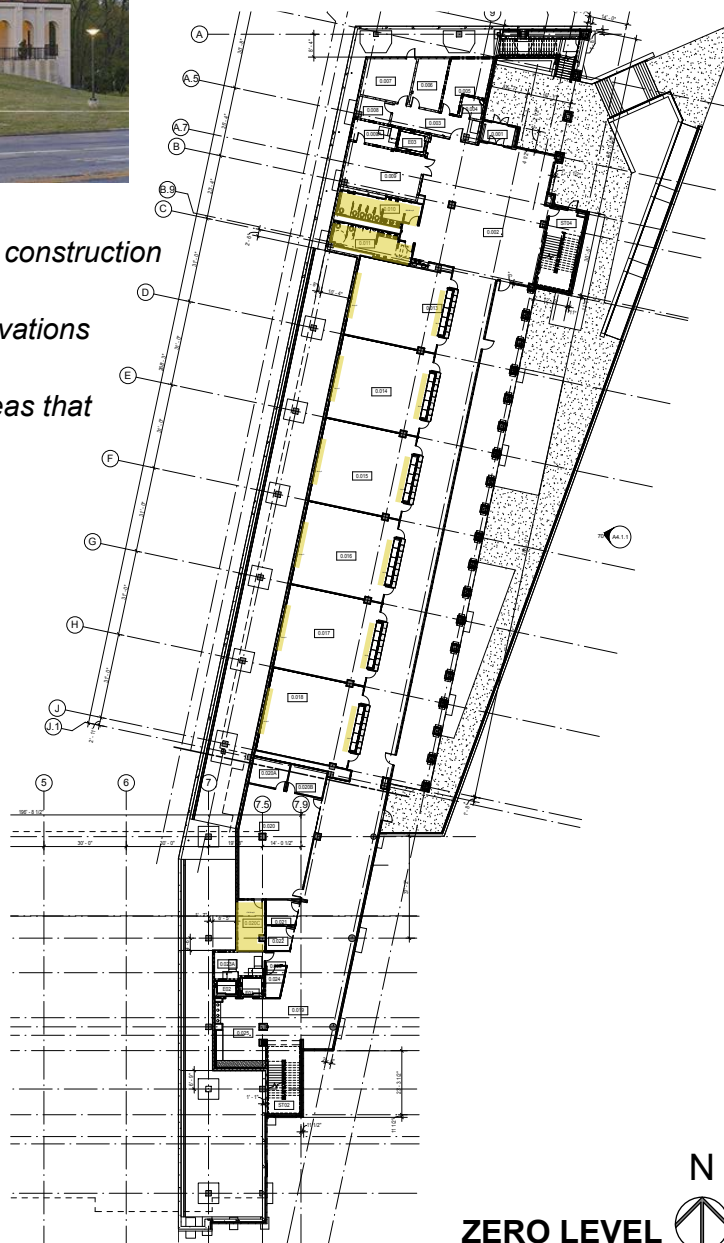
Interior bathrooms and corridors away from windows. Interior offices if accessible and interior classrooms away from glass.

### OCCUPANT ESTIMATE:

931 total occupants in relatively safer areas (at 5 SF per occupant)

### NOTES (5 SF per occupant):

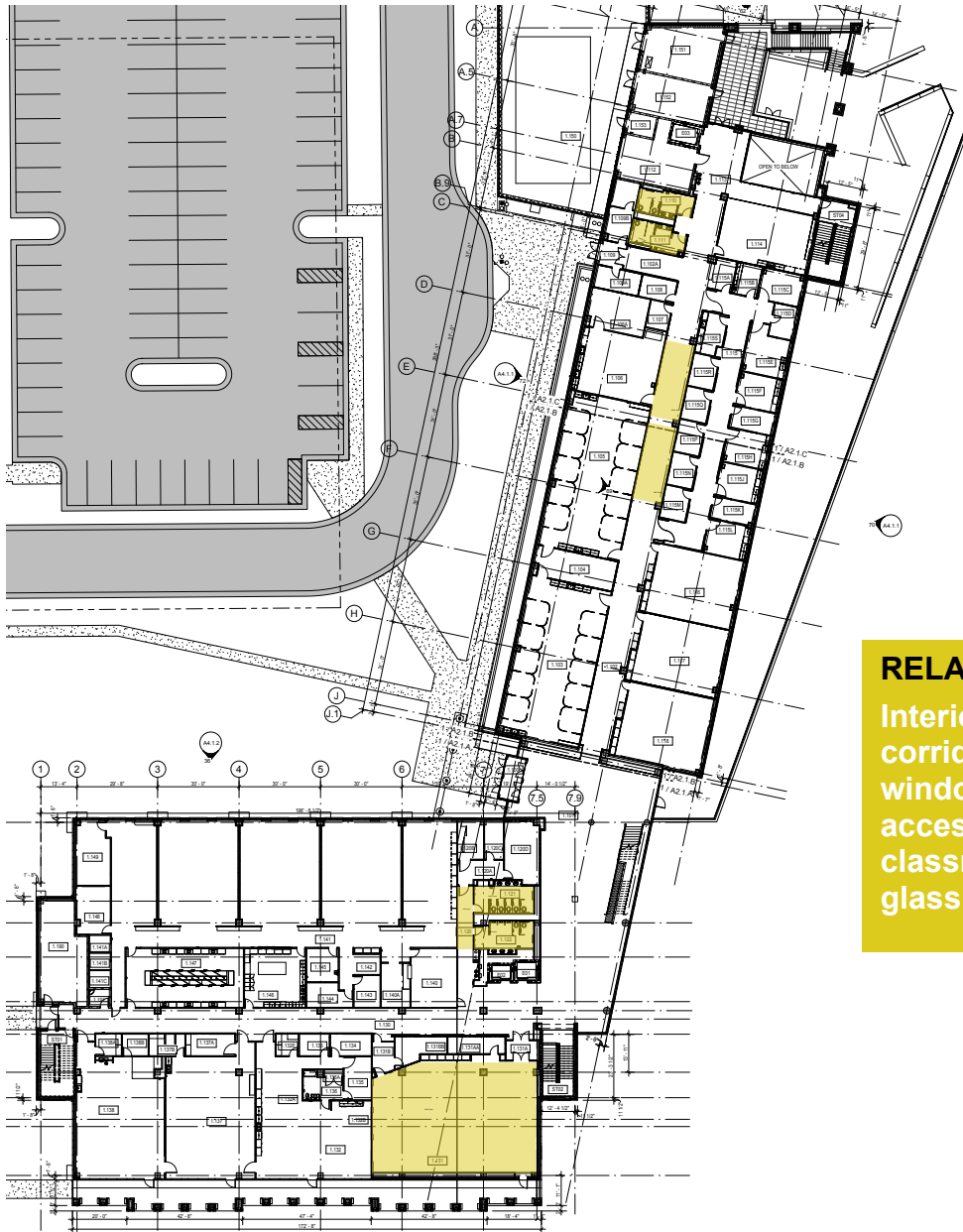
- Restrooms = 516 SF = 103 occupants
- Against walls in Classrooms = 68 SF each x 6 = 408 SF = 81 occupants
- Office = 174 SF = 34 occupants



## Rogers Nursing and Health Science Center

### NOTES (5 SF per occupant):

- South Restrooms and Corridor = 549 SF = 109 occupants
- Center Corridor = 617 SF = 123 occupants
- North Restrooms = 350 SF = 70 occupants



### RELATIVE SAFER AREA:

Interior bathrooms and corridors away from windows. Interior offices if accessible and interior classrooms away from glass.

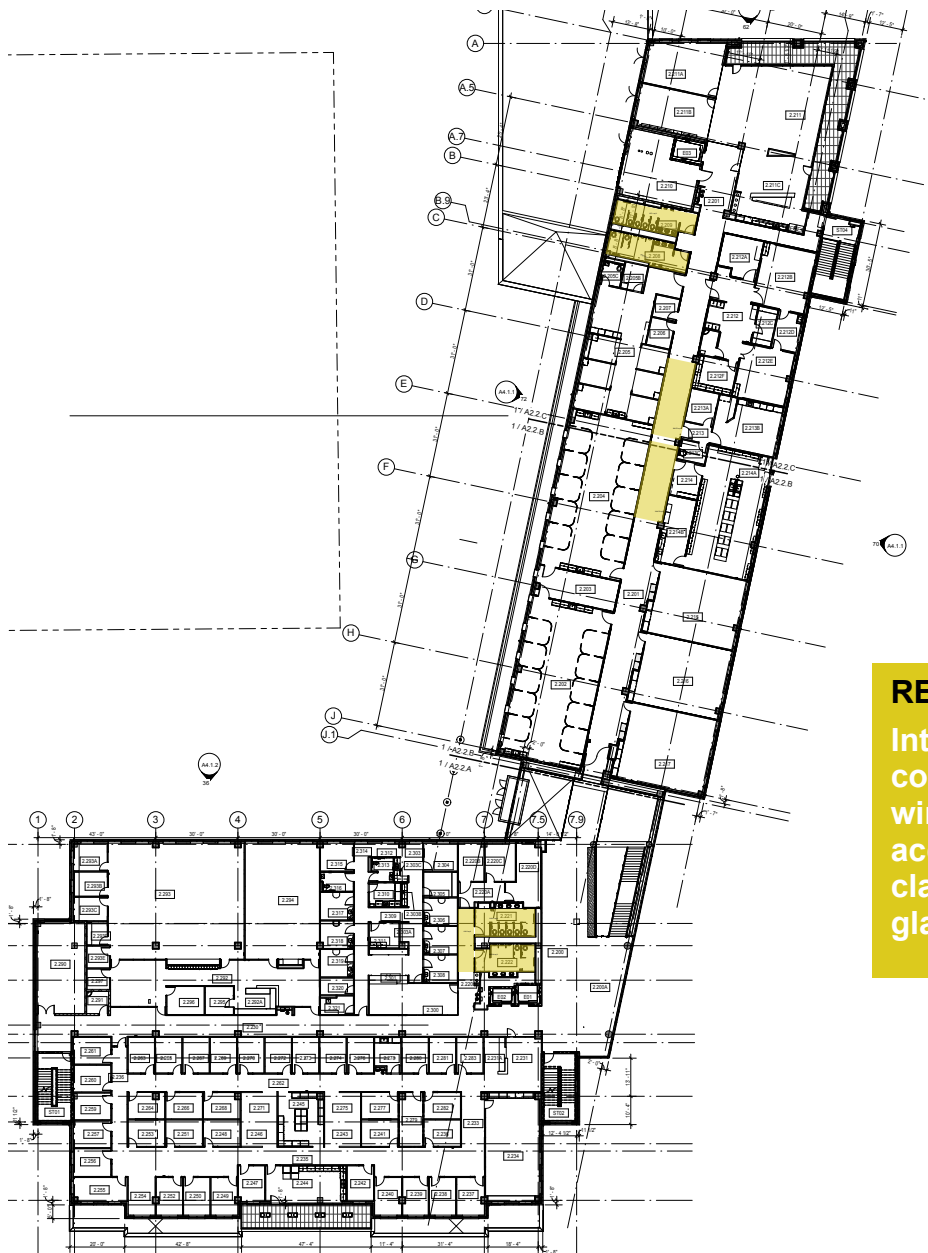
FIRST LEVEL



## Rogers Nursing and Health Science Center

### NOTES (5 SF per occupant):

- South Restrooms and Corridor = 549 SF = 109 occupants
- Center Corridor = 617 SF = 123 occupants
- North Restrooms = 350 SF = 70 occupants



### RELATIVE SAFER AREA:

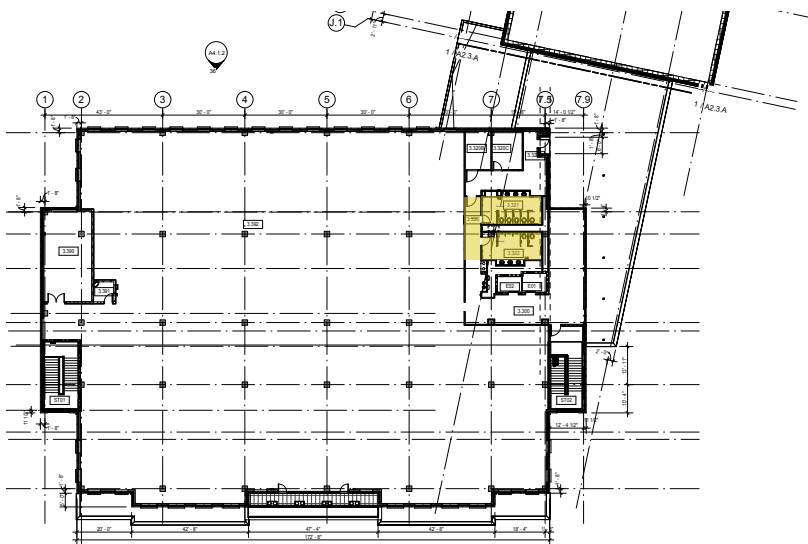
Interior bathrooms and corridors away from windows. Interior offices if accessible and interior classrooms away from glass.

SECOND LEVEL



## A wide-angle photograph of the Tyler Junior College building at dusk. The building is a large, multi-story structure with a combination of brick and light-colored stone or concrete. It features a central section with a prominent entrance and two side wings. The ground floor is characterized by a series of large, arched openings, some of which are illuminated from within. The upper floors have numerous windows, many of which are also lit up. The building is set on a grassy lawn, and a paved road is visible in the foreground. The sky is a deep blue, indicating twilight.

- South Restrooms and Corridor = 549 SF = 109 occupants



N



**Interior bathrooms and corridors away from windows. Interior offices if accessible and interior classrooms away from glass.**

## Rogers Student Center



### RELATIVE SAFER AREA:

Interior bathrooms, stairwells, interior corridors away from windows. Faculty dining if accessible and the kitchen area.

**LEVELS:** Three Levels

**CONSTRUCTION:** Appears to be conventional steel construction

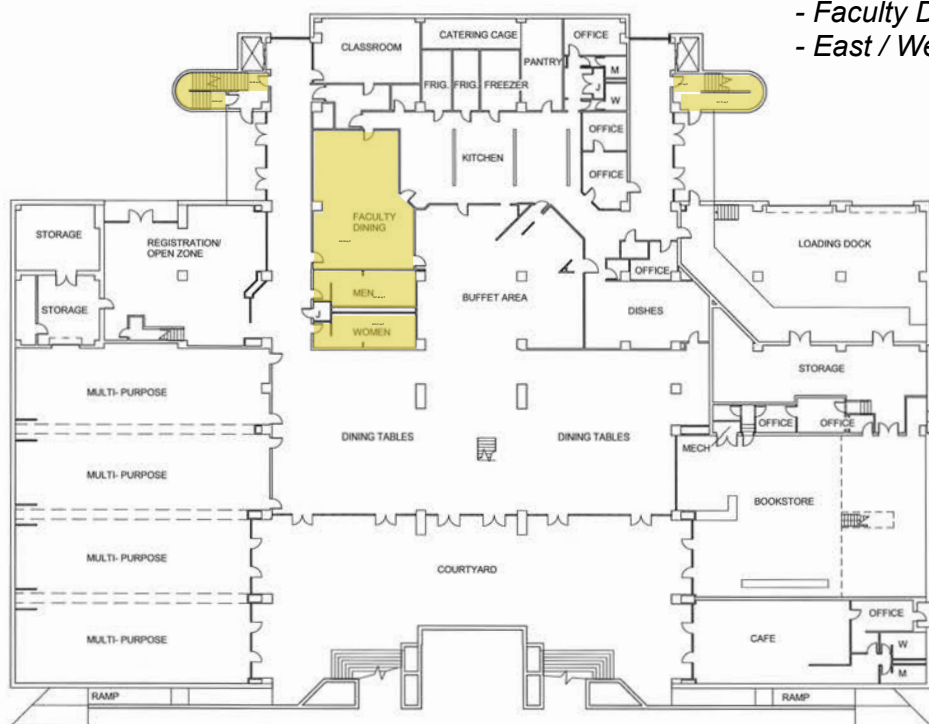
(Assessments are based on general structural observations and the following recommended areas should not be construed as storm shelters or safe rooms but as areas that may be somewhat safer than other areas)

### OCCUPANT ESTIMATE:

735 total occupants located in relatively safer areas (using 5 SF per occupant)

### NOTES (5 SF per occupant):

- Restrooms = 457 SF = 91 occupants
- Faculty Dining = 843 SF = 168 occupants
- East / West Stair = 341 SF = 68 occupants



FIRST LEVEL



## Rogers Student Center



### RELATIVE SAFER AREA:

Interior bathrooms,  
stairwells, interior corridors  
away from windows.

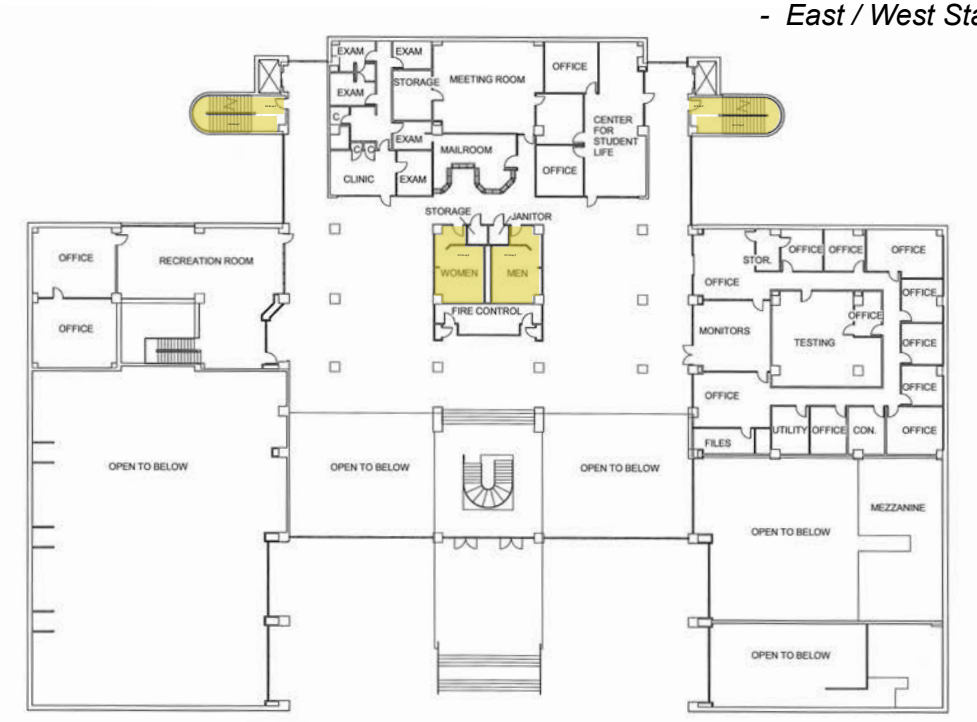
**LEVELS:** Three Levels

**CONSTRUCTION:** Appears to be conventional steel construction

(Assessments are based on general structural observations  
and the following recommended areas should not be  
construed as storm shelters or safe rooms but as areas that  
may be somewhat safer than other areas)

### NOTES (5 SF per occupant):

- Central Restrooms = 434 SF = 86 occupants
- East / West Stairs = 341 SF = 68 occupants



### SECOND LEVEL



## Rogers Student Center



### RELATIVE SAFER AREA:

Interior bathrooms,  
stairwells, interior corridors  
away from windows.

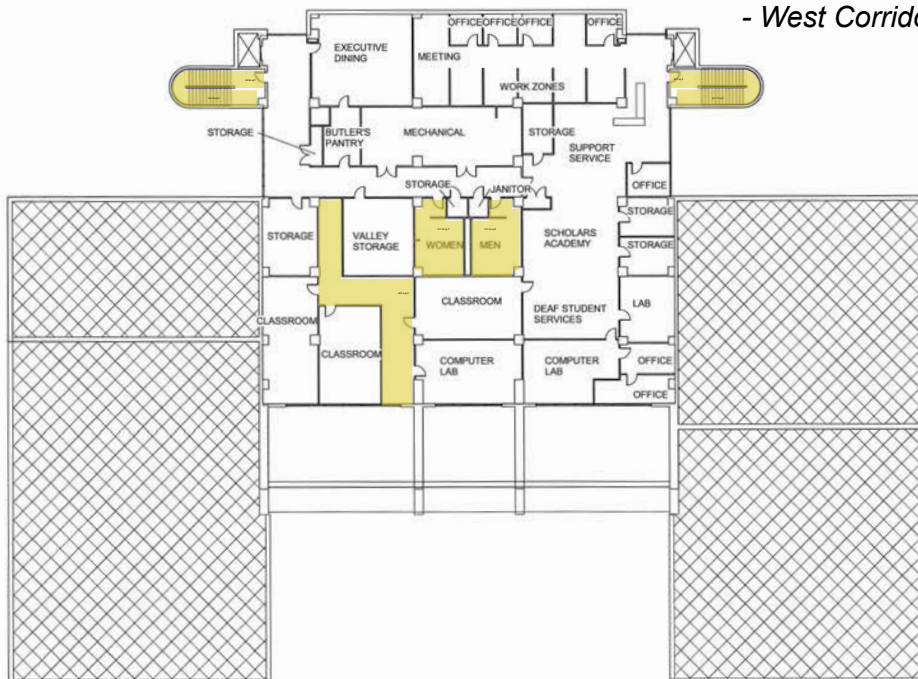
**LEVELS:** Three Levels

**CONSTRUCTION:** Appears to be conventional steel construction

(Assessments are based on general structural observations  
and the following recommended areas should not be  
construed as storm shelters or safe rooms but as areas that  
may be somewhat safer than other areas)

### NOTES (5 SF per occupant):

- Central Restrooms = 434 SF = 86 occupants
- East / West Stairs = 341 SF = 68 occupants
- West Corridor = 502 SF = 100 occupants



THIRD LEVEL



## Tyler Museum of Art



**LEVELS:** Two Levels

**CONSTRUCTION:** Appears to be conventional steel construction

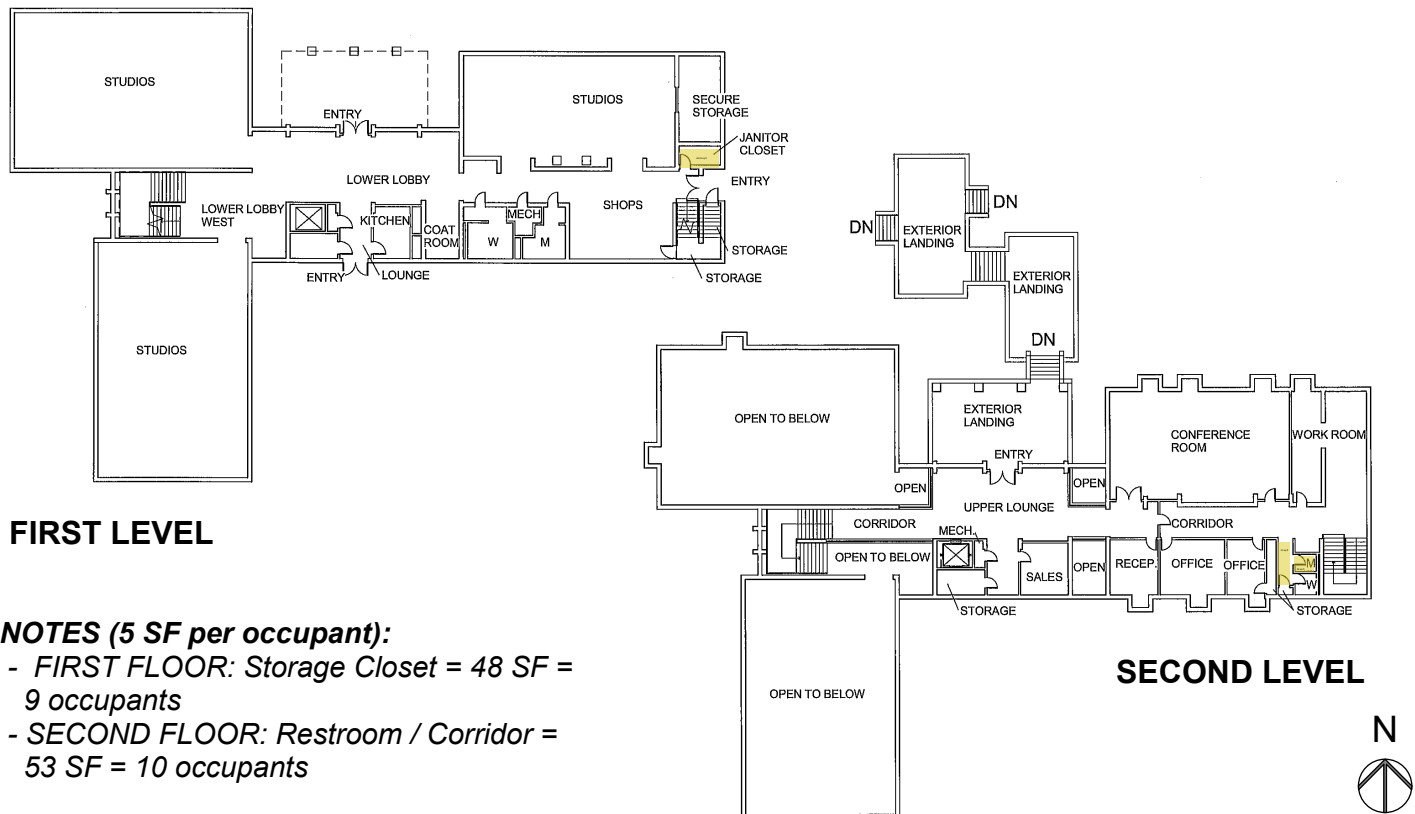
### RELATIVE SAFER AREA:

Storage closet on first level,  
single restroom on second  
level.

### OCCUPANT ESTIMATE:

19 total occupants located in  
relatively safer areas (using  
5 SF per occupant)

(Assessments are based on general structural observations  
and the following recommended areas should not be  
construed as storm shelters or safe rooms but as areas that  
may be somewhat safer than other areas)



## Vaughn Conservatory



**LEVELS:** One

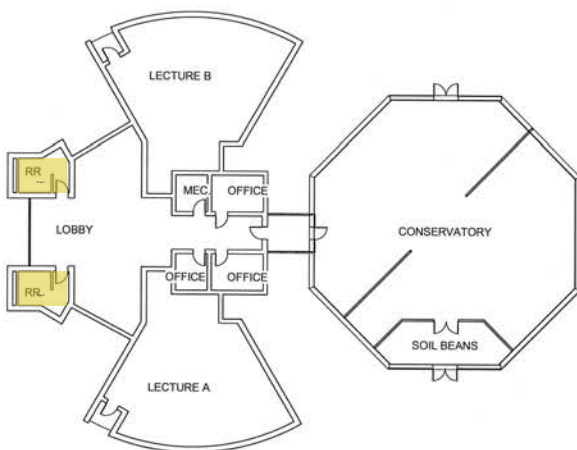
**CONSTRUCTION:** Unknown

*(Assessments are based on general structural observations and the following recommended areas should not be construed as storm shelters or safe rooms but as areas that may be somewhat safer than other areas)*

**RELATIVE SAFER AREA:**  
Interior restrooms

**OCCUPANT ESTIMATE:**

46 total occupants in  
relatively safer areas (at 5 SF  
per occupant)



**FIRST LEVEL**

**NOTES (5 SF per occupant):**  
- Restrooms = 234 SF = 46 occupants



## Vaughn Library



### RELATIVE SAFER AREA:

Interior corridor, Restrooms, Stairs

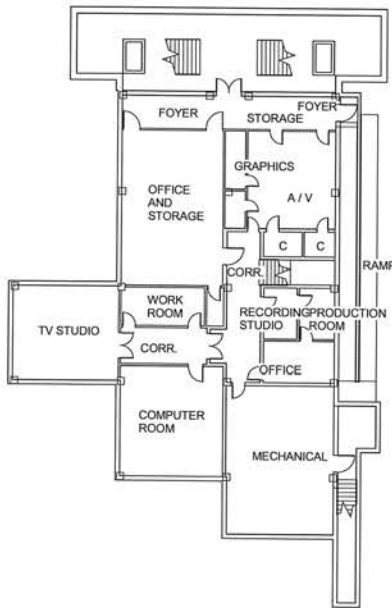
### OCCUPANT ESTIMATE:

142 total occupants located in relatively safer areas (using 5 SF per occupant)

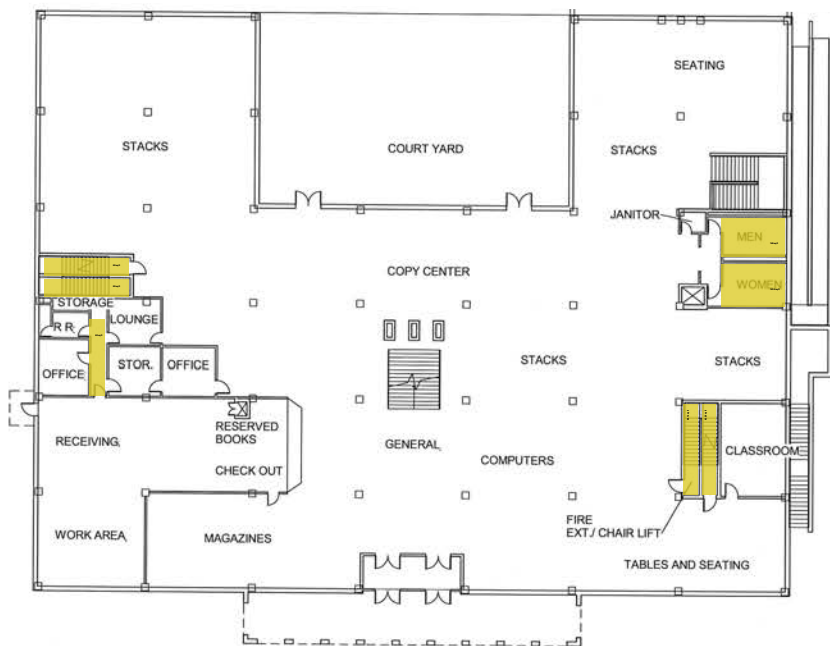
**LEVELS:** One Level plus Basement

**CONSTRUCTION:** Appears to be conventional steel construction

(Assessments are based on general structural observations and the following recommended areas should not be construed as storm shelters or safe rooms but as areas that may be somewhat safer than other areas)



**BASEMENT LEVEL** (not accessible due to access control)



**FIRST LEVEL**

**NOTES (5 SF per occupant):**

- West Stair = 198 SF = 39 occupants
- East Stair = 170 SF = 34 occupants
- Restrooms = 346 SF = 69 occupants
- Office Corridor = 80 SF = 16 occupants



## Wagstaff Gym



### RELATIVE SAFER AREA:

Restrooms and interior corridors away from windows

### OCCUPANT ESTIMATE:

395 total occupants located in relatively safer areas (using 5 SF per occupant)

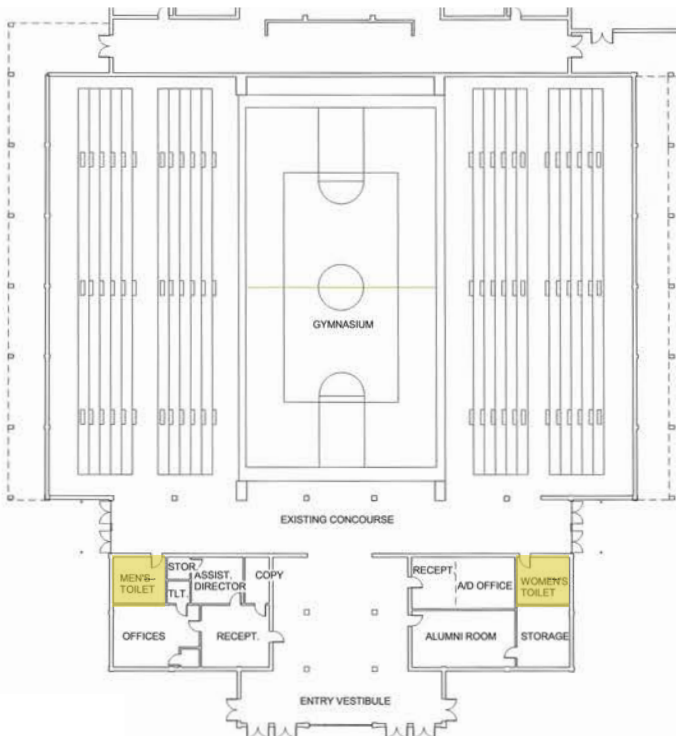
**LEVELS:** One Level plus Basement

**CONSTRUCTION:** Appears to be conventional steel construction

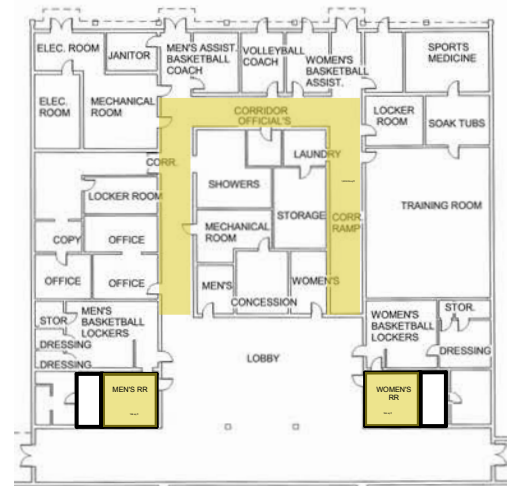
(Assessments are based on general structural observations and the following recommended areas should not be construed as storm shelters or safe rooms but as areas that may be somewhat safer than other areas)

### NOTES (5 SF per occupant):

- South Restrooms = 366 SF = 73 occupants
- North Restrooms = 392 SF = 78 occupants
- North Corridor / Ramps = 1,223 SF = 244 occupants



FIRST LEVEL - SOUTH



FIRST LEVEL - NORTH



## Wise Auditorium



**LEVELS:** Two Levels plus Mechanical Basement

**CONSTRUCTION:** Appears to be conventional steel construction

(Assessments are based on general structural observations and the following recommended areas should not be construed as storm shelters or safe rooms but as areas that may be somewhat safer than other areas)

### RELATIVE SAFER AREA:

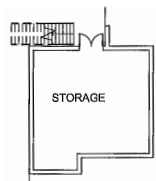
Storage behind Stage

### OCCUPANT ESTIMATE:

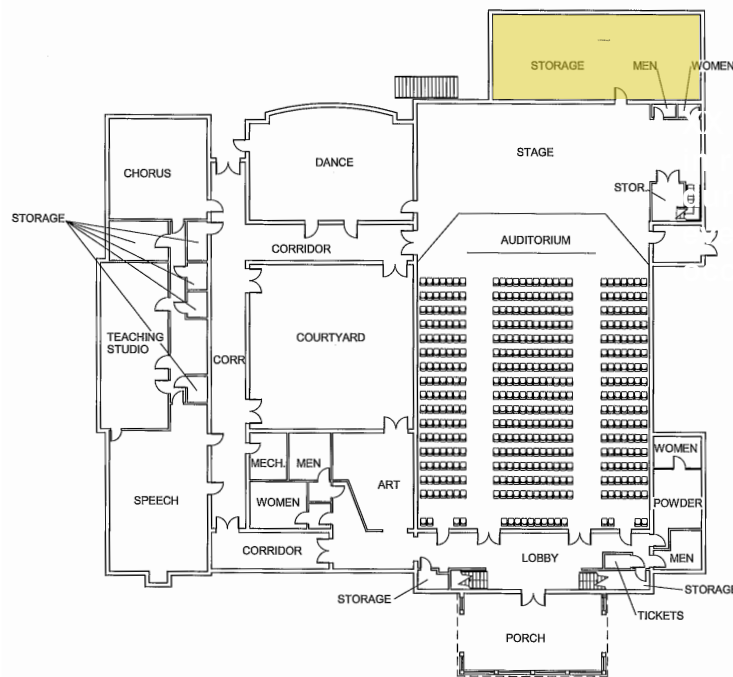
234 total occupants located in relatively safer areas (using 5 SF per occupant)

### NOTES (5 SF per occupant):

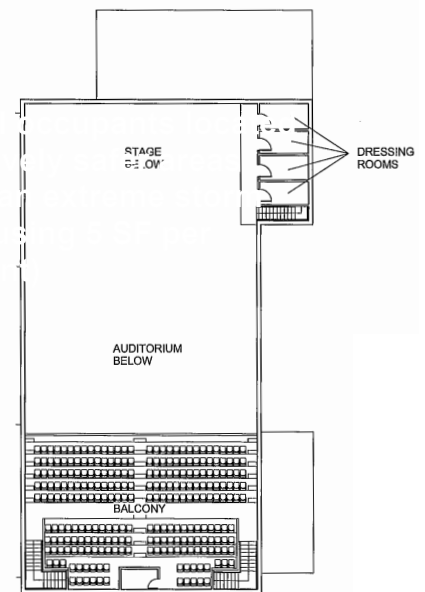
- Storage = 1,172 SF = 234 occupants



**MECHANICAL BASEMENT**



**FIRST LEVEL**



**SECOND LEVEL**



## Wise Cultural Arts



### RELATIVE SAFER AREA:

Restrooms, interior alcoves at offices, dressing room

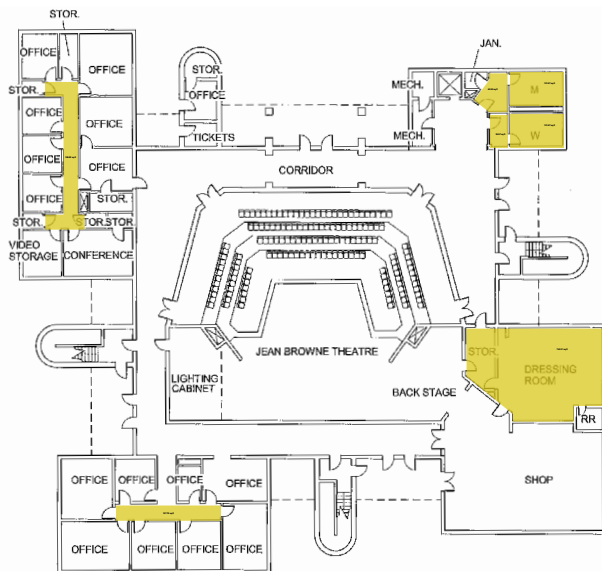
### OCCUPANT ESTIMATE:

473 total occupants located in relatively safer areas (using 5 SF per occupant)

**LEVELS:** Two Levels

**CONSTRUCTION:** Appears to be conventional steel construction

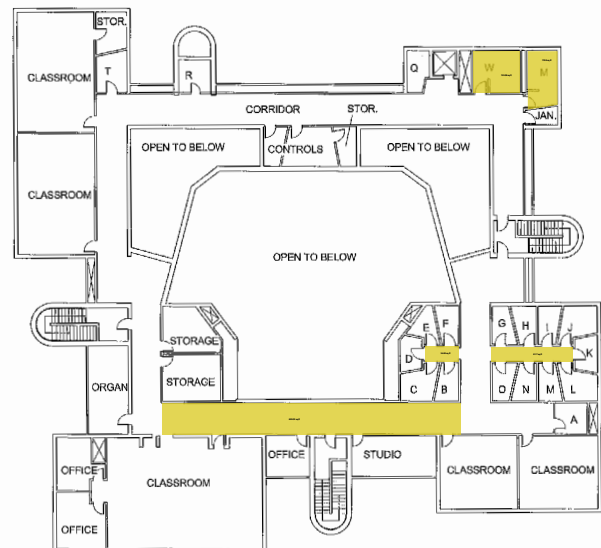
(Assessments are based on general structural observations and the following recommended areas should not be construed as storm shelters or safe rooms but as areas that may be somewhat safer than other areas)



### FIRST LEVEL

#### NOTES (5 SF per occupant):

- Northwest Corridor = 188 SF = 37 occupants
- Southwest Corridor = 107 SF = 21 occupants
- Dressing Room = 743 SF = 148 occupants
- Restrooms = 344 SF = 68 occupants



### SECOND LEVEL

#### NOTES (5 SF per occupant):

- South Corridor = 639 SF = 127 occupants
- East Corridors = 115 SF = 23 occupants
- Restrooms = 245 SF = 49 occupants

